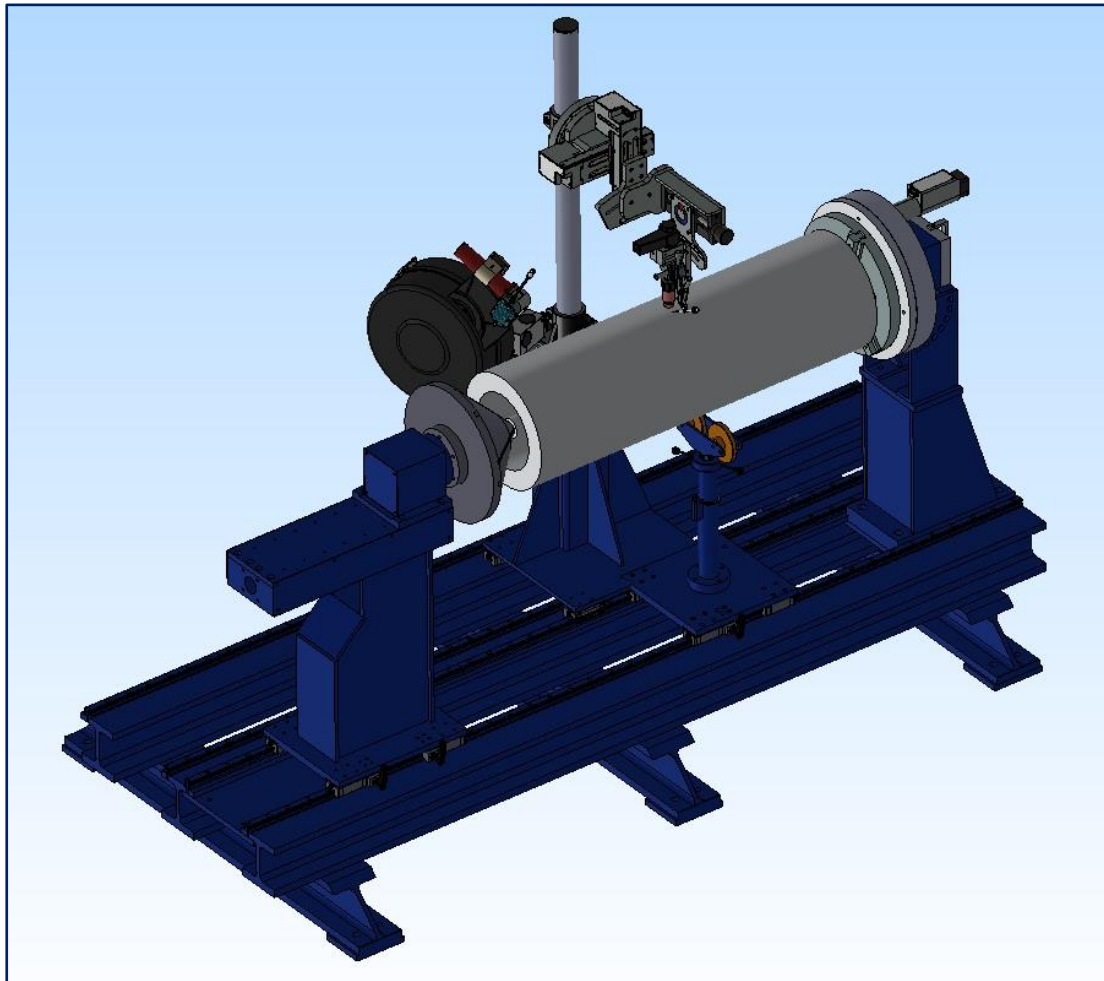


WELDING LATHE



Pictures for illustrative purposes only. Not contractual

Polysoude S.A.S. certified

ISO 9001
BUREAU VERITAS
Certification



Welding lathe_EN_Rev. 03_Date Application : 17/06/2019_Rédacteur : CPO
« La seule version de référence de ce document est celle gérée sur «Référentiel
Qualité_Documents de structure

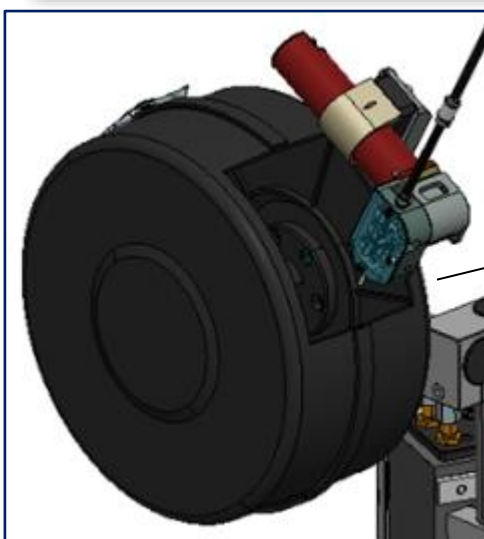
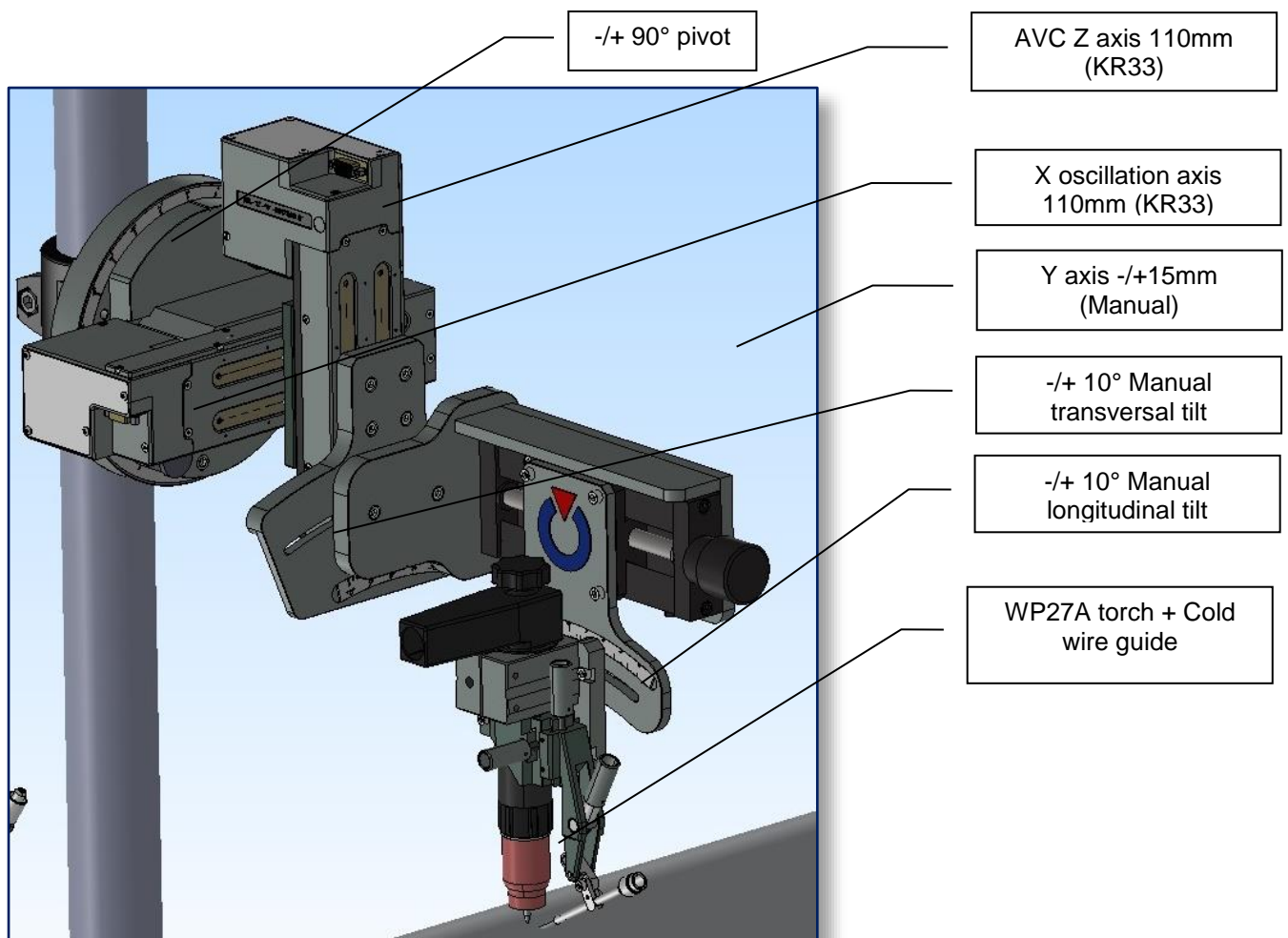


A Member of

Polysoude S.A.S.
ZI du Bois Briand
2 rue Paul Beaupère - F - 44300 NANTES
Tél. : +33(0)2 40 68 11 00 - Fax: +33(0)2 40 68 11 88
www.polysoude.com - E-mail : info@polysoude.com
Société par actions simplifiée, au capital de 4 105 452 Euros,
R.C.S. Nantes B 858 800 931 - TVA N° : FR 64858800931

1.1. WELDING HEAD AND SLIDES

Polysoude propose a cold wire TIG welding lathe for welding rotary joints of pipelines (circumferential and circular welds on basic & specimen products):



Wire feeder with 15Kg spool holder

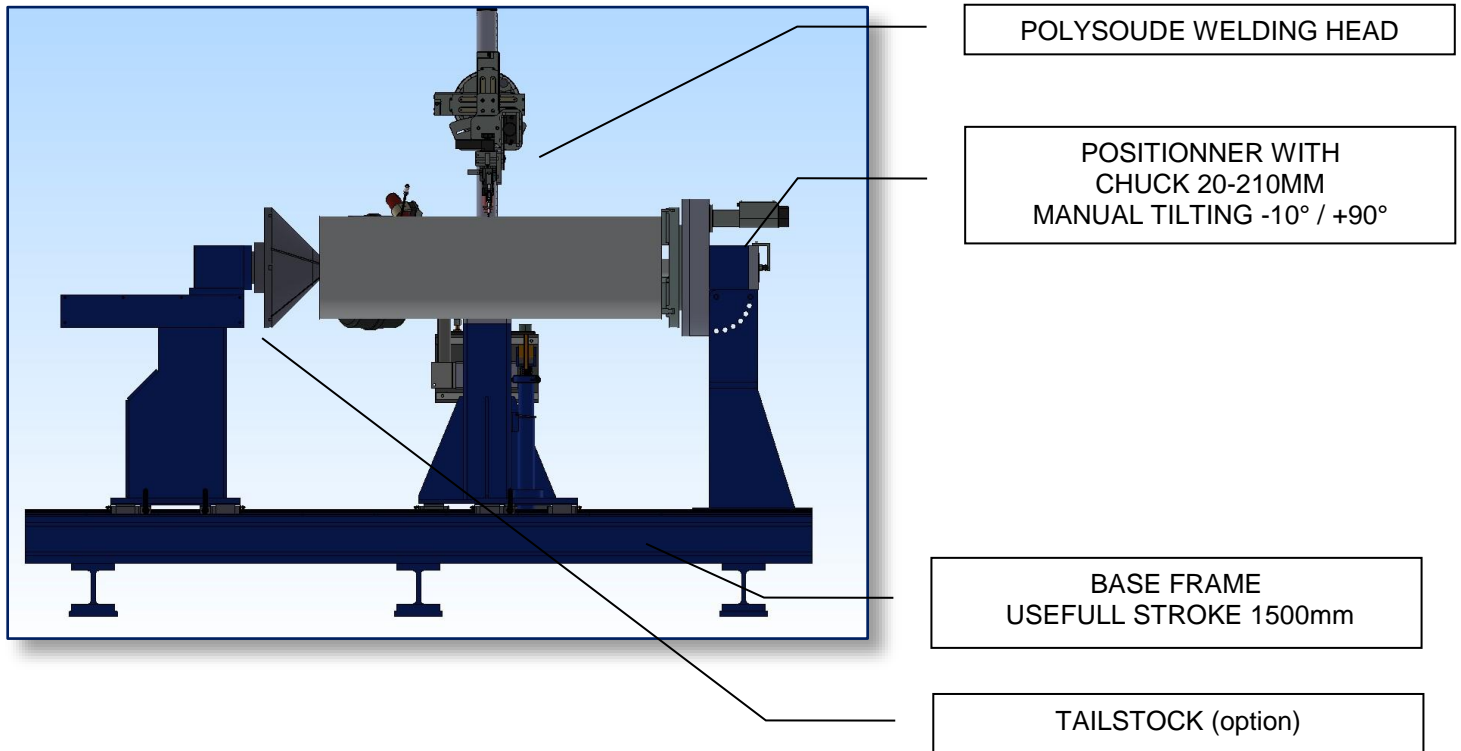
TECHNICAL DATA OF WP27 TIG TORCH

Bundle	
Type	Quick-release connections
Duty cycle	
Average current (A)	450 at 100%
Manual wire adjustments	
Wire diameter (mm)	0,6 / 0,8 / 1,0 / 1,2mm
Electrodes diameter (mm)	4

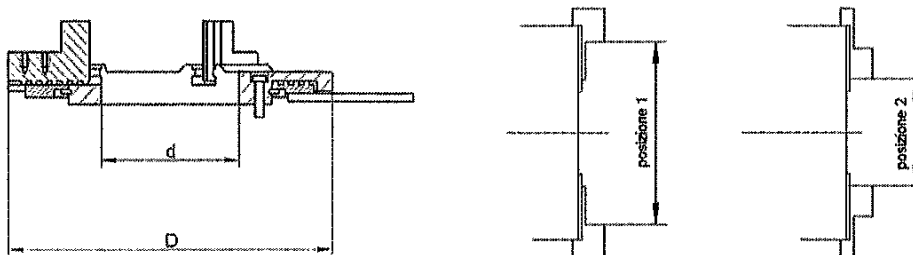
1.2. AUTOMATION EQUIPMENT

Polysoude will supply a welding lathe with following technical characteristics:

- Length capacity 1500m
- Welding diameters 50-300mm
- Max load capacity 300Kg



- Motorized positioner with a D.C. motor supplied and directly controlled by POLYSOUDE power source. Standard Gear box included in the supply to achieve the speed required. Ground connection up to 600A at 100%.
- Self centering chucks for positioners with easy-use tool thanks to the following features:
 - The quick locking lever system enables a simple and fast application
 - The design of the chuck allows reasonable weight and moderate thickness
 - The cuck fastening is very simple thanks to 3 tapped through hole (120°)
 - The wide through hole of the self centering chucks make them suitable for pipes work.



Model Type	d [mm]	D[mm]	Position n.1	Position n.2
200	80	200	Ø 110-210	Ø 20-130

1.3. LAYOUT

