

# exact

## PipeCut V1000

### New era for spiral duct cutting

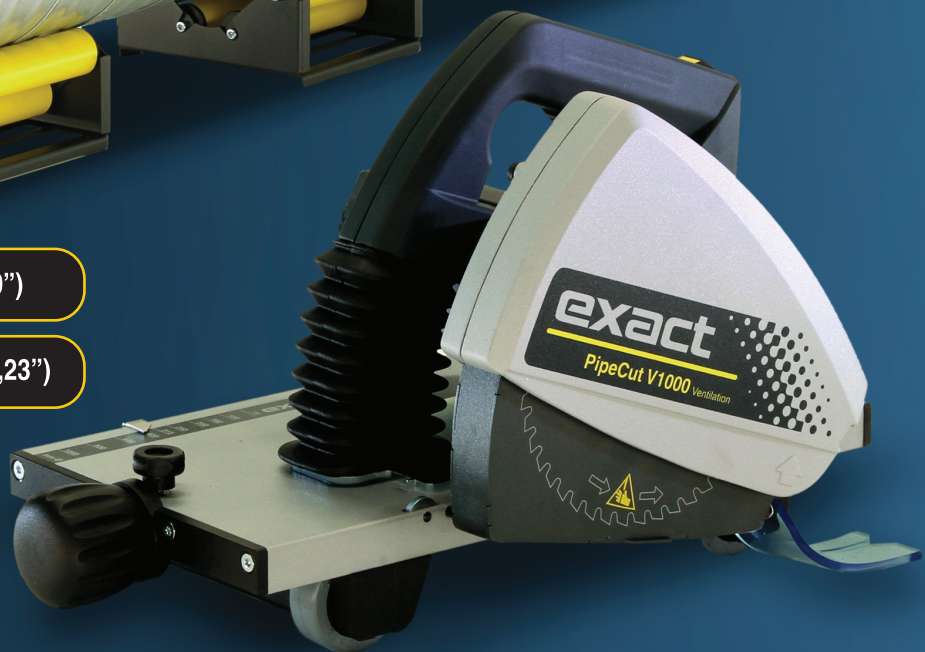
The Original  
Pipe Cutting System  
made by Exact Tools

Designed in Finland



Ø 75 mm - 1000 mm (3" - 40")

d = 1,5 mm / 6 mm (0.06" / 0,23")



#### V1000 starts a new era for spiral duct cutting.

Exact Pipe Cut V1000 offers ease of use and a huge size range for cutting spiral ducts. The cut ends are straight and ready to be connected. As an optional extra we can supply special pipe supports for the V1000 that can hold spiral ducts from 75 mm to 1000 mm .

[www.exacttools.com](http://www.exacttools.com)

# exact

## PipeCut V1000

### Blade

**Cermet V155:** In Exact PipeCut V1000 we use a specially designed Cermet V155 blade that has 58 extremely durable ceramic alloy tips. It is designed for cutting thin sheet materials such as spiral ducts. Cermet blades can be sharpened a couple of times like new.

### Pipes

Exact PipeCut V1000 can be used to cut all types spiral ducts and other thin wall ventilation pipes. It has a wide cutting range from 75 mm to 1000 mm.

### Pipe Support V1000

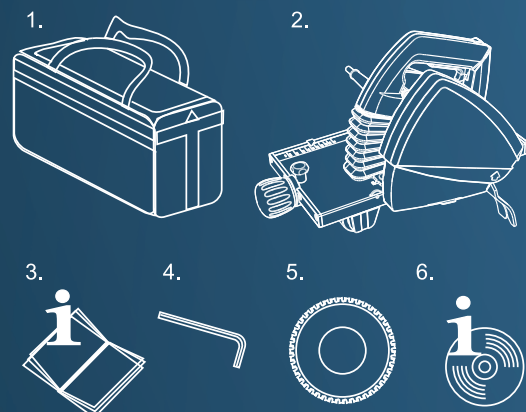
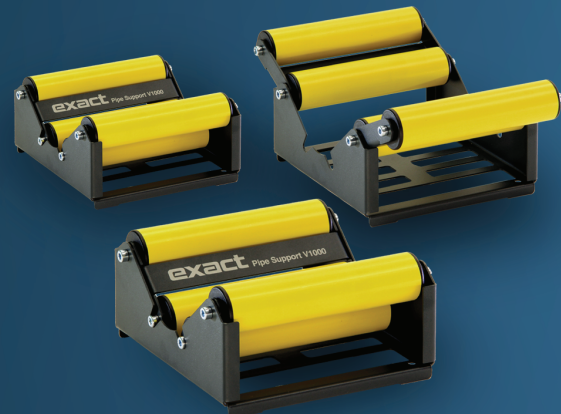
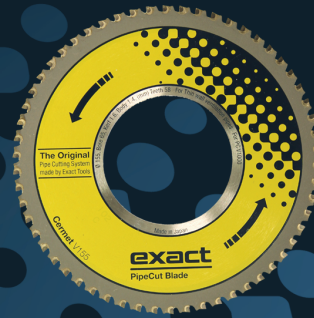
We recommend that you use the Exact Pipe Support V1000 to support the pipes when using the Exact Pipecut V1000 pipe saw. These pipe holders are specially designed to be used with the Exact Pipecut V1000 pipe saw. They can be used with pipes from 75 mm (3") up to 1000 mm (40"). The pipe supports are sold separately. Each set of Pipe Support V1000 contain 3 pcs of two position supports in a shoulder bag.

### Exact PipeCut V1000 pipe cutting system package contents:

1. PipeCut shoulder bag
2. Exact PipeCut V1000 pipe saw
3. Operating instructions booklet
4. Allen key 5 mm fitted to the machine
5. Cermet V155 blade fitted on the machine
6. DVD-video disc containing instructions and demonstrations

### Technical data

Model	Pipecut V1000
Voltage	110 V, 120V and 230 V / 50-60 Hz
Power / Current	1010 W / 8.4 A
No-Load speed	4000 / min
Intermittent operation	2,5 min ON / 7,5 min OFF (S3 25%)
Blade diameter	155 mm (6.1")
Mounting bore	65 mm (2,55")
Weight	6,0 kg (13 lbs)
Range of use Ø	75 mm – 1000 mm (3." - 40")
Max. pipe wall	1,5 mm (0,06") / 6 mm (0,23") in seam



[www.exacttools.com](http://www.exacttools.com)