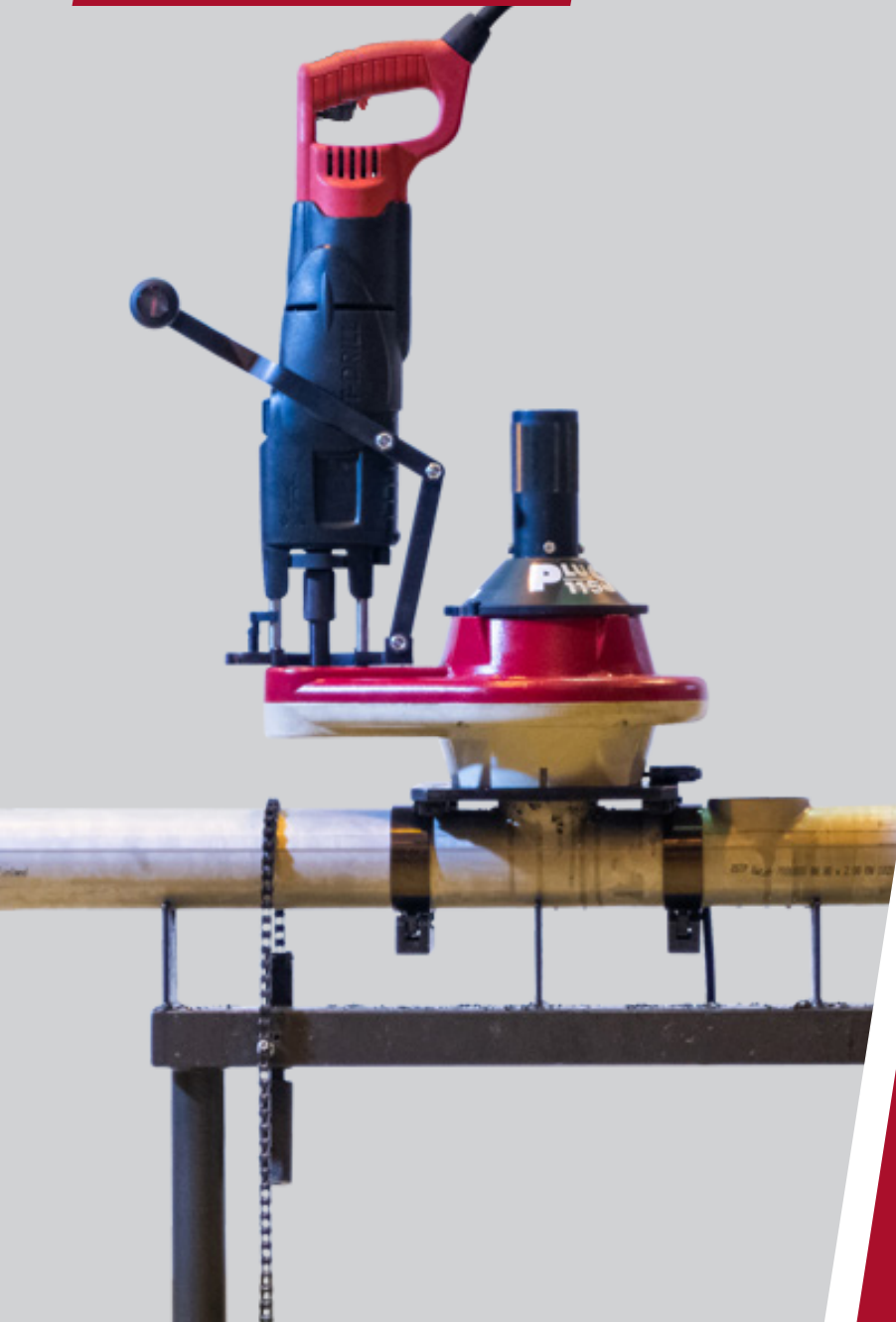


T-DRILL

PRODUCTIVITY AS A PRODUCT.

NEW!



COLLARING SYSTEM

Portable collaring system for stainless steel branching

PLUS 115 SS

PLUS 115 SS HEAVY DUTY TEE FORMING SYSTEM

The **PLUS 115 SS** Portable Collaring System is an effortless, capacity expanding attachment for the heavy duty **T-65 SS** Collaring Machine. While the **T-65 SS** forms max. 54 mm (2" O.D.) outlets for butt welded joints on stainless steel pipes, the **PLUS 115 SS** reaches up to 114,3 mm (4" O.D.) in just a few minutes.

By eliminating two welded joints, it gives comparable quality and flexibility with mechanically formed tee joints. If tube polishing is required at the weld points, the **PLUS 115 SS** reduces that by 60 %, as well as any inspection costs. The branch pipe can be connected to a formed outlet either by orbital welding or by manual welding.

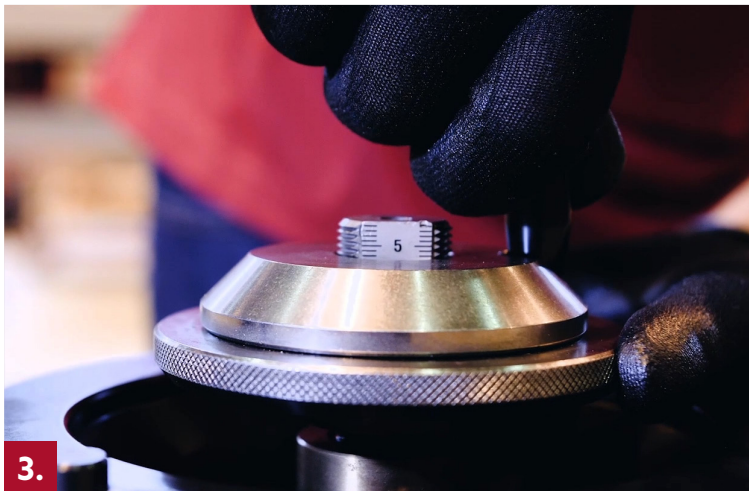
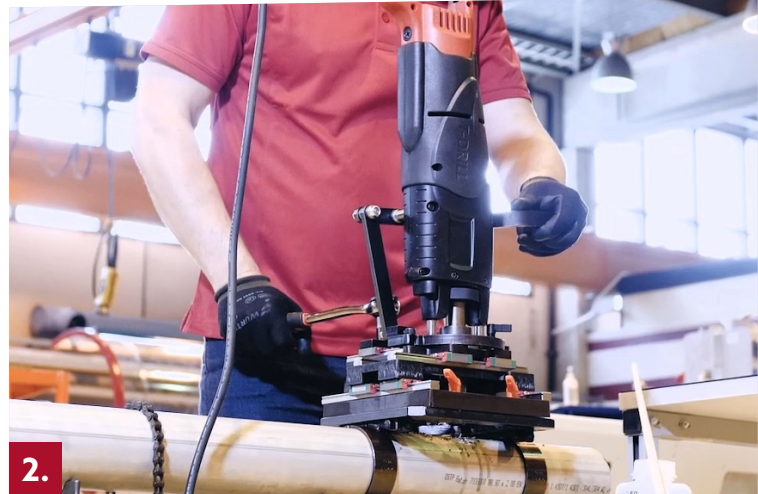
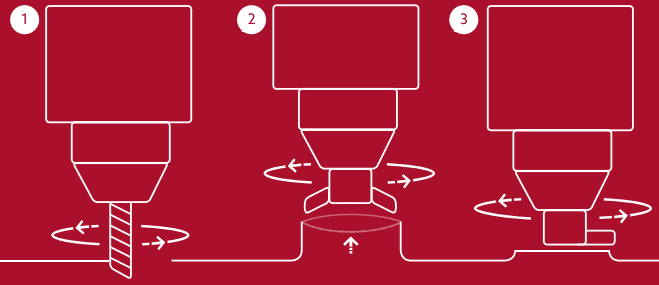


THE T-DRILL PROCESS

1. Pilot hole milling

2. Collaring

3. Trimming

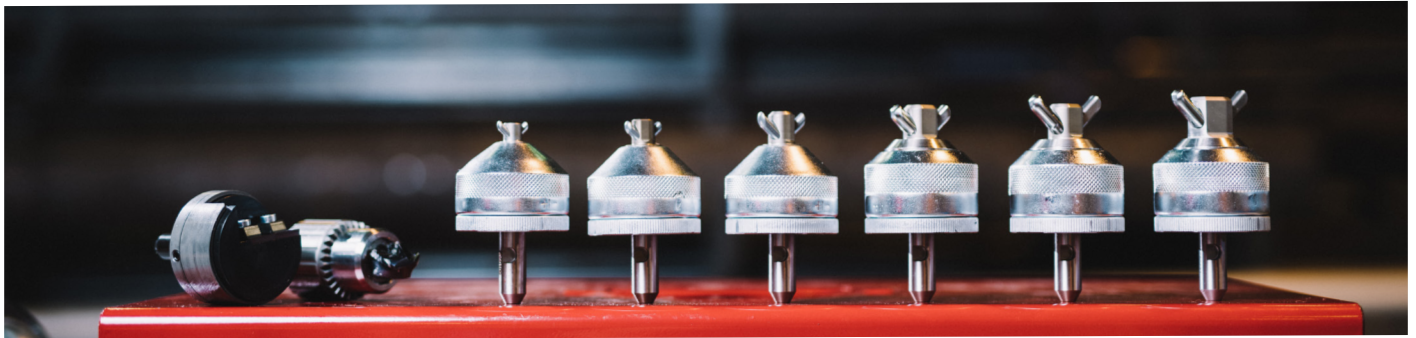


PLUS 115 Stainless Steel for 48,3-114,3 mm (2"-4" O.D.) branching

The **PLUS 115 SS** is an optimal solution for the process piping industry and suits well for both construction and renovation projects, as well as the demanding field conditions in maintenance and repair work.

1. Fully adjustable mechanism for optimal, elliptical shape of pilot hole
2. Easy and effortless to use, as it has two handles; the upper one for drilling through the pipe and the other is for elliptical movement
3. Simple collar height adjustment
4. Heavy duty T-DRILL collaring heads with stepless adjustment ensures exactly precise collar sizes from 48,3 mm up to 114,3 mm (2"-4" O.D.)





Capacity | DIN / ISO

		Branch tube outside diameter					
		mm	48,3	60,3	76,1	88,9	114,3
1 Run tube outside diameter	60,3	3,4	3,4	-	-	-	-
	76,1	3,4	3,4	3,4	-	-	-
	88,9	3,4	3,4	3,4	3,4	-	-
	114,3	3,4	3,4	3,4	3,4	3,4	-
	139,7	3,4	3,4	3,4	3,4	3,4	3,4
	168,3	3,4	3,4	3,4	3,4	3,4	3,4
	219,1	3,4	3,4	3,4	3,4	3,4	3,4

Max. wall thickness of stainless steel tube

Capacity | O.D. Tube

		Branch tube outside diameter					
		O.D.	2	2 1/2	3	3 1/2	4
1 Run tube outside diameter	2 1/2	0,134"	0,134"	-	-	-	-
	3	0,134"	0,134"	0,134"	-	-	-
	3 1/2	0,134"	0,134"	0,134"	0,134"	-	-
	4 1/2	0,134"	0,134"	0,134"	0,134"	0,134"	-
	5 1/2	0,134"	0,134"	0,134"	0,134"	0,134"	-
	6	0,134"	0,134"	0,134"	0,134"	0,134"	-
	8	0,134"	0,134"	0,134"	0,134"	0,134"	-

Max. wall thickness of stainless steel tube

Capacity | Nominal Pipe Size

		Branch tube outside diameter					
		NPS	1 1/2	2	2 1/2	3	4
1 Run tube outside diameter	2	Sch 10	Sch 10	-	-	-	-
	2 1/2	Sch 10	Sch 10	Sch 10	-	-	-
	3	Sch 10	Sch 10	Sch 10	Sch 10	-	-
	4	Sch 10	Sch 10	Sch 10	Sch 10	Sch 10	-
	5	Sch 10	Sch 10	Sch 10	Sch 10	Sch 10	-
	6	Sch 10	Sch 10	Sch 10	Sch 10	Sch 10	-
	8	Sch 10	Sch 10	Sch 10	Sch 10	Sch 10	-

Max. wall thickness of stainless steel tube

DO IT WITH T-DRILL

Cut costs – Improve quality – Increase profit

- No T-fittings
- No costly inventories
- No tube cutting

- Only one welded joint
- Minimized inspection cost
- Tee ratio variation flexibility

- Smaller risk of leakage
- Optimized flow-characteristics
- Hygienic, clean weld points

MANUFACTURER:

T-DRILL

T-DRILL OY
 Ampujantie 32
 66400 Laihia, FINLAND
 Tel. +358 6 475 3333
 sales@t-drill.fi
 www.t-drill.fi

REPRESENTED BY:

T-DRILL Industries Inc.
 1740 Corporate Drive,
 Suite #820, Norcross,
 Georgia 30093 USA
 Tel. +1-770-925-0520,
 sales@t-drill.com
 www.t-drill.com