

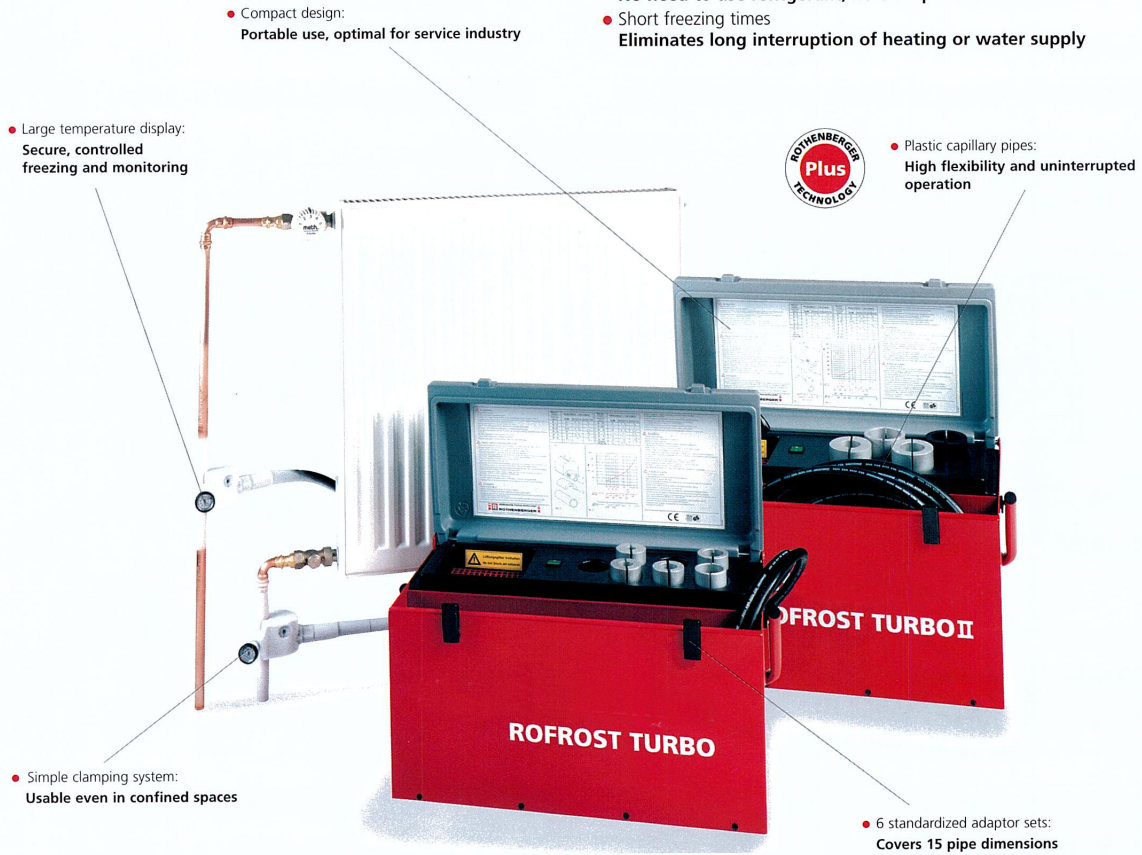
ROFROST® TURBO 1-1/4" & 2"

High tech pipe freezing system for copper, steel, and plastic composite pipes

Ideal for maintenance, repair, and expansion work in plumbing and heating installations

Performance Characteristics

- Ergonomically formed freezing clamps: **Simple clamping, even in confined spaces**
- Equal ice build-up on pipe: **Protects materials**
- CFC-free refrigerant: **Environmentally friendly**
- Fully automatic, controlled freezing: **Saves time and money**
- Self-contained freezing unit: **No need to use refrigerant, no transport of steel canisters**
- Short freezing times: **Eliminates long interruption of heating or water supply**



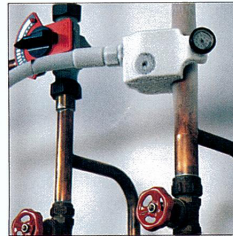
Anti-kink, diffusion proof, monotube system with plastic capillary pipes guarantees high flexibility and uninterrupted operation



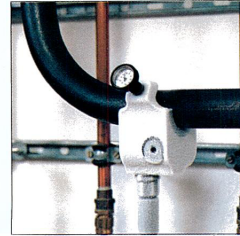
Excellent for working close to walls or on floors



Use for parallel-running pipes and in confined spaces



Good close to walls, only 2 inches contact surface required



ROFROST® TURBO 1-1/4"

Refrigeration set with 2 refrigeration hoses and freezing clamps for copper O.D. 3/8" – 1-3/8" steel dia. 1/8" – 1-1/4" plastic and multilayer composite pipes

Set includes 7 reduction inserts, each with 2 half-shells, sizes II, IV, VI, VII, VIII, X, and XII for copper pipes O.D. 1/2", 5/8", 3/4", 7/8", 1", 1-1/8", 1-3/8", and steel pipes dia. 1/2", 3/4", 1", 1-1/4"

Description	lb	No.
ROFROST® TURBO 1-1/4"	55	62202

ROFROST® TURBO 2"

Refrigeration set with 2 refrigeration hoses and freeze clamps for copper O.D. 3/8" – 2-3/8" steel dia. 1/8" – 2" plastic and multilayer composite pipes

Set includes 4 reduction inserts, each with 2 half-shells, sizes A, D, E, and F for copper pipes O.D. 1-3/8", and steel pipes dia. 3/4", 1", 1-1/4", 1-1/2"

Optional Expansion Set (62230) for copper pipes O.D. 1/2", 5/8", 7/8", and steel pipes dia. 1/4", 1/2"

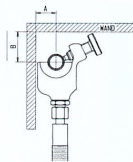
Description	lb	No.
ROFROST® TURBO 2"	55	62205

Space requirements for freezing clamps

ROFROST® TURBO 1-1/4"

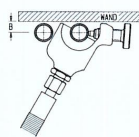
A_{min} = 1.1 in
B_{min} = 1.5 in

Use on vertical pipes in corners



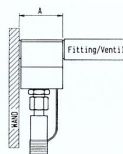
A_{min} = 2.1 in

Use on pipe wall fittings/valves



B_{min} = .6 in

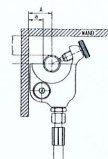
Use on vertical pipes on walls



ROFROST® TURBO 2"

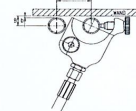
A_{min} = 1.5 in
B_{min} = 1.8 in

Use on vertical pipes in corners



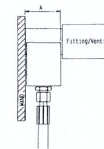
A_{min} = 2.3 in

Use on pipe wall fittings/valves



B_{min} = .7 in

Use on vertical pipes on walls

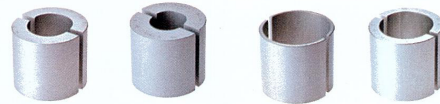


Reduction Inserts



ROFROST® TURBO 1-1/4"

Reduction Insert Size	copper pipe O.D.	steel pipe dia.	lb	No.
Size I	3/8"	1/8"	0.2	62217
Size II	1/2"	-	0.2	62211
Size IV	5/8"	-	0.2	62219
Size VI	3/4"	-	0.2	62224
Size VII	7/8"	1/2"	0.2	62214
Size VIII	1"	-	0.2	62226
Size IX	-	3/4"	0.2	62215
Size X	1-1/8"	-	0.2	62227
Size XII	1-3/8"	1"	0.2	62216



ROFROST® TURBO 2"

Reduction Insert Size	copper pipe O.D.	steel pipe dia.	lb	No.
Size A	-	3/4"	0.2	62231
Size B	1-1/8"	-	0.2	62232
Size C	1-1/4"	-	0.2	62233
Size D	1-3/8"	1"	0.2	62234
Size E	-	1-1/4"	0.2	62235
Size F	-	1-1/2"	0.2	62236
Size G	2-1/8"	-	0.2	62237
Expansion Set for copper O.D. 1/2", 5/8", 7/8" and steel dia. 1/4", 1/2"	-	-	1.5	62230

The reduction insert Size E also serves as an adaptor piece for fitting ROFROST® TURBO 1-1/4" reduction inserts, from size I - size XII.

ROFROST Heat Conductive Paste

Description	Content	lb	No.
ROFROST® Heat Conductive Paste	150 ml	0.5	62291

For optimal heat conduction between cold sleeve, reduction insert and pipe surface, residue free work, physiologically neutral.



DISTRIBUTED BY: