

Table marking system NetMarker®





NetMarker® – The compact table marking system

The innovative, network-compatible CNC table marking system NetMarker® excels at marking quality, simple handling and ease of use. NetMarker® offers unequalled opportunities.

The NetMarker® raises the standards for high precision marking requirements within industrial production. It also offers many other further component marking opportunities with a wide range of additional features.

The competitive table marking system NetMarker® works as a stand-alone machine. With its compact design being extremely space-saving. The electro pneumatically operated dot peen marking system is suitable for durable, efficient, permanent and quick marking tasks with the ability to mark almost all kind of parts made of metal, plastics and wood. Of course, you can mark pressure-sensitive, thin-walled, coated or moderately curved parts as well.

The NetMarker® features maximum marking speeds, with very high marking qualities and an extremely attractive price-performance ratio. It is maintenance-free!





NetMarker® – Software

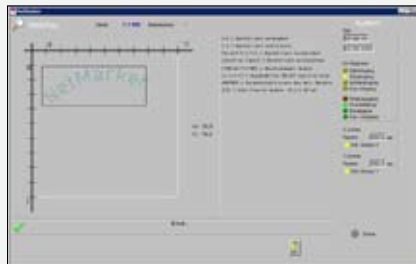
Through-out the development of the CNC table marking system NetMarker®, MARKATOR® applied significant importance on a system having simple operation. This intention is permitted by the system program NetMarker®, which is included within the package. The system program is easy to install on any PC and immediately ready to start. The table marking system can be controlled by an Ethernet or USB connection. It is an ideal partner for your industrial operation.

The system program NetMarker® is 100% operator prompted. It is designed to be transparent and self-explanatory. The system program NetMarker® offers all modern characteristics of an intuitive program creation. It enables an online help option as well as the possibility to change the marking position and text within the marking preview screen.

Furthermore, an additional rotating axis can be programmed. All established features, like automatic numbering, circle marking, date and time are already enclosed in the scope of delivery. Special signs and logos are available upon request.



Mainmenu

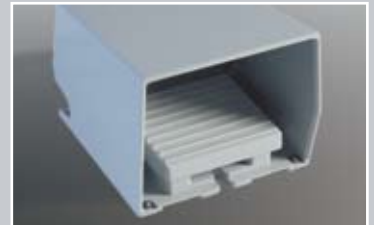


Preview



Program option logo conversion

Program to transform logos or graphic files in HPGL format. Scaling, turning and positioning occur within the marking file.



Electric foot switch

Safe working! Both hands remain free for positioning of the part to be marked.



Rotating axis

A device for mechanical clamping allows you to mark round parts 360° axial and radial. Equipment: Rotating axis incl. three-jaw chuck Ø 80 mm, with jaws for clamping inside and outside, flange, mounting plate incl. name plate support with magnets, control board for motors, connection cable and program package.



Name plate support NetMarker®

Magnetic clamping device to fix the plate. Basically for orthogonal plates in different sizes. Stop angle is relief-milled for safe fixing of the plates.



NetMarker[®] – Technics



Digital height display



Viewing window



Clamp lever



Different stylus sizes

The dot peen marking head is mounted on a solid machine table, which includes a height adjustable column frame. The respectively adjusted height is shown on the digital display. A hand wheel simplifies the setting of the correct pin position.

In addition, two clamp levers are integrated within the column frame to fix the marking head at the exact adjusted height. An accidental displacement of the pin distance to the material to be marked is thus excluded and a constant good marking result is guaranteed. An exact positioning of the marking pin in the X and Y direction is given by an additional, helpful viewing window.

The motion mechanism of the marking axis is driven by two high resolution stepping motors with optimal wear behavior. The marking head with hardened, grinded and chromed guides in combination with ball screws is maintenance-free. The basic position is scanned by two contamination insensitive, inductive sensors.

The central control unit of the CNC table marking system is fixed directly to the column frame. Because of its compact design no additional space is required. It contains all the necessary components to operate the marking system NetMarker[®]: e.g. power sections for the stepping motors, microprocessor, digital in-/outputs and connections to the PC.

TECHNICAL DATA

Marking area (x/y)
100 x 100 mm

Marking speed
Up to max. 3 characters per second

Available character heights
0.7 bis 99.9 mm

Fonts
2 standard fonts, proportional and non-proportional, scalable, similar to DIN 1451

Marking direction
Any, from 0 to 360°

Available characters
Figures 0-9
Capital letters A-Z
Small letters a-z
Various punctuation marks, such as . , / -

Marking frequency (oscillation)
Approx. 300 Hz, depending on size of stylus and marked material

Electric power supply
230 V – 50 Hz

Compressed Air
6 bar



NetMarker® XL – with external central control unit

The CNC table marking system NetMarker® is also available with an external central control unit. Up to now a PC was necessary to operate the NetMarker® but with the XL version of the table marking system it is possible to operate the system with the central control unit.

The software of the compact and small-sized central control unit is 100% operator-controlled, clearly-represented and well-structured. The central control unit itself can be operated with a USB-keyboard. The operation of the central control unit is based on the software of the previous model NetMarker®. Because of this, switching from the NetMarker® to the new NetMarker® XL version will not cause any problems.

The well known standard functions will remain, i.e. auto numbering, date, time and circular marking. As well as the possibility to connect a rotating axis to mark round work pieces. Special characters and logos are optional.

XL Integrated interfaces

Ethernet:

- Connection to the PC-Software XL CONTROL
- Easy transfer of marking files, logos and fonts

USB-A :

- Easy transfer of marking files, logos and fonts
- Data transfer through e.g. an USB-Barcode-Scanner
- Connection of an USB-keyboard
- A USB slot is mounted at the front plate of the central control unit

USB-B:

- Connection to the PC-Software XL CONTROL

XL Storage capacity

It is possible to store several hundred marking files, logos and fonts on the central control unit. Because of this it is possible to create and activate marking files for example for each single customer, shift or work piece. This marking file may contain the marking text including all information and coordinates for the marking.

XL Large Colour LC Display

The central control unit of the NetMarker® XL is equipped with a large, high resolution colour LC-Display with a resolution of 640 x 480 pixels. This display enables an easy creating, modifying and monitoring of customized marking files.



Integrated interfaces



Software



Large Colour LC Display and USB-slot on the front panel

**Your local partner:
Equipment Sales Company**

118 South Jennings Street
Sioux City, Iowa 51101

Phone: (800) 255-6046
(712) 255-6046

Fax: (712) 252-5619

info@equipmentsalesco.net
www.equipmentsalesco.net

MARKATOR®

Bunsenstraße 15
71642 Ludwigsburg
Germany

Telefon +49 (0) 7144 - 8575 - 0
Telefax +49 (0) 7144 - 8575 - 600

info@markator.de
www.markator.de

