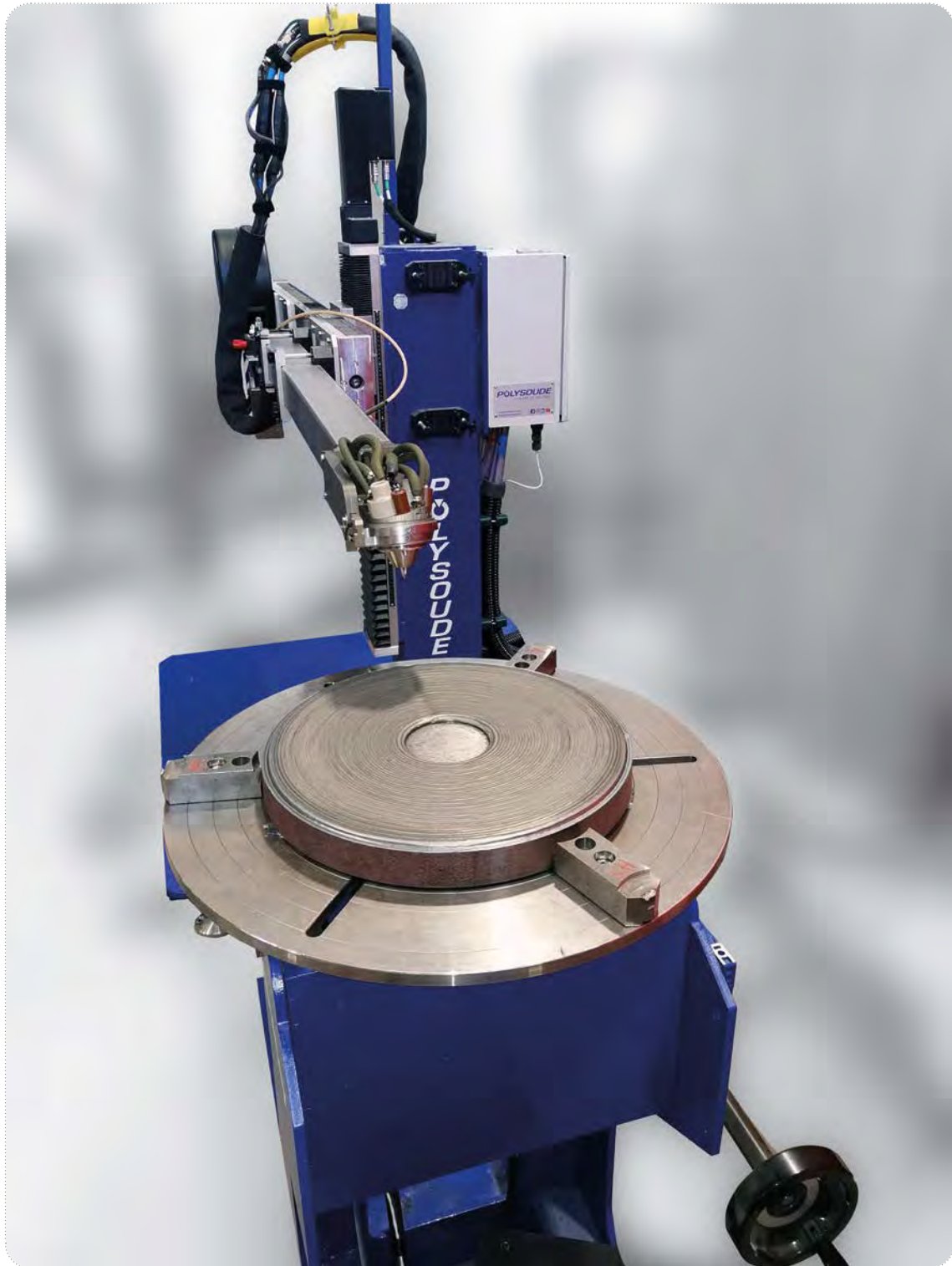





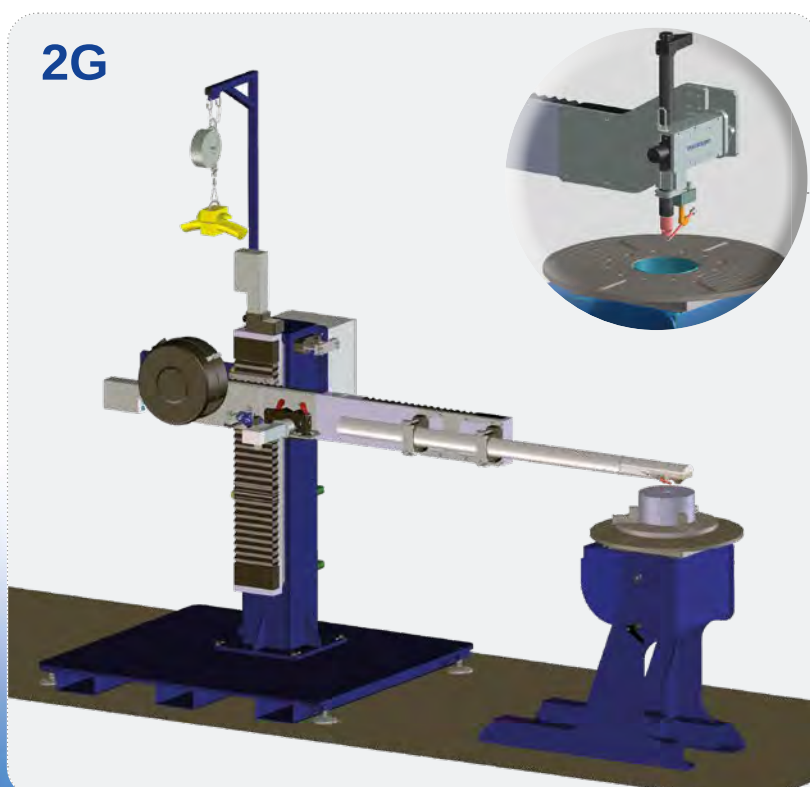
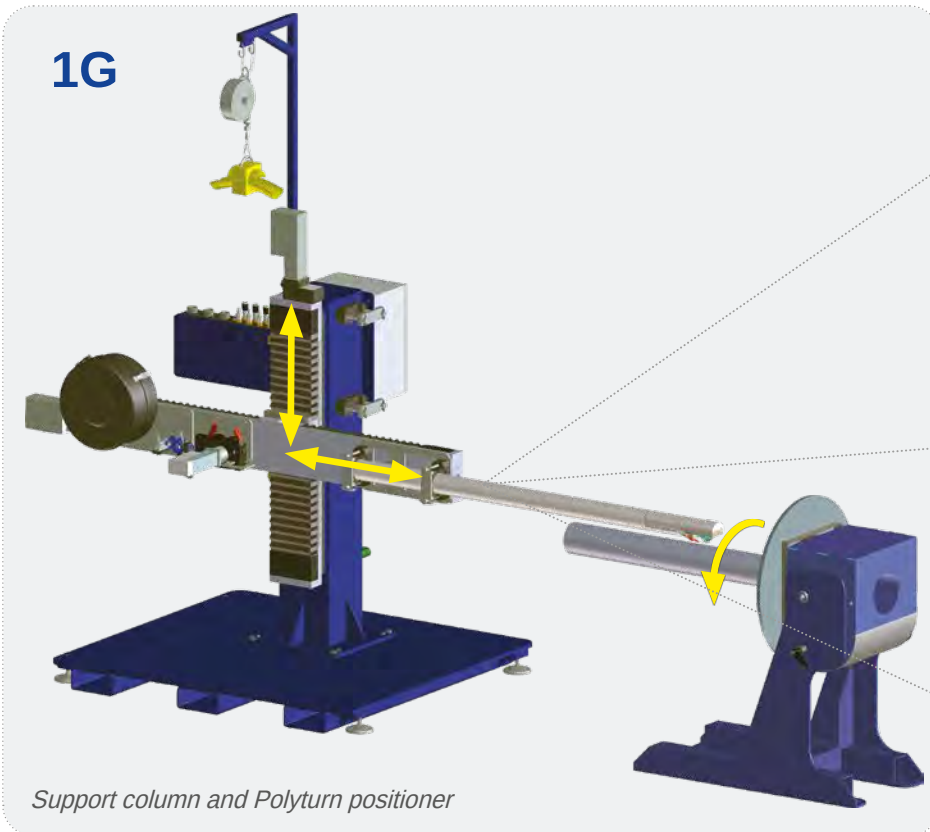


## PolyClad Easy



## ▶ Advantages

- Ease of setup
- Extra compact
- Versatility: vertical and horizontal overlay positions
- Delivered with a library of typical weld overlay programmes
- Flexibility: wide range of lances and torches
- Multiprocesses:   

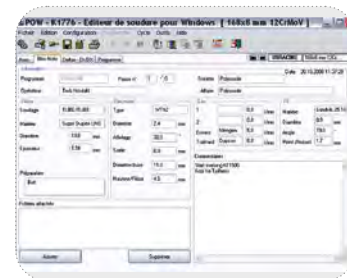


## ► Programming software

Solution with conventional controller:

### Main items

- Support column
- Cross slides (AVC/Step-over)
- Wire feeder
- Lance/torch
- Titable positioner Polyturn
- Smart welding station



### ► Variants / options - accessories

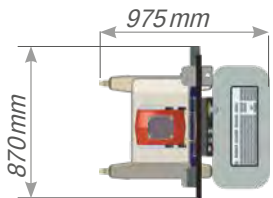
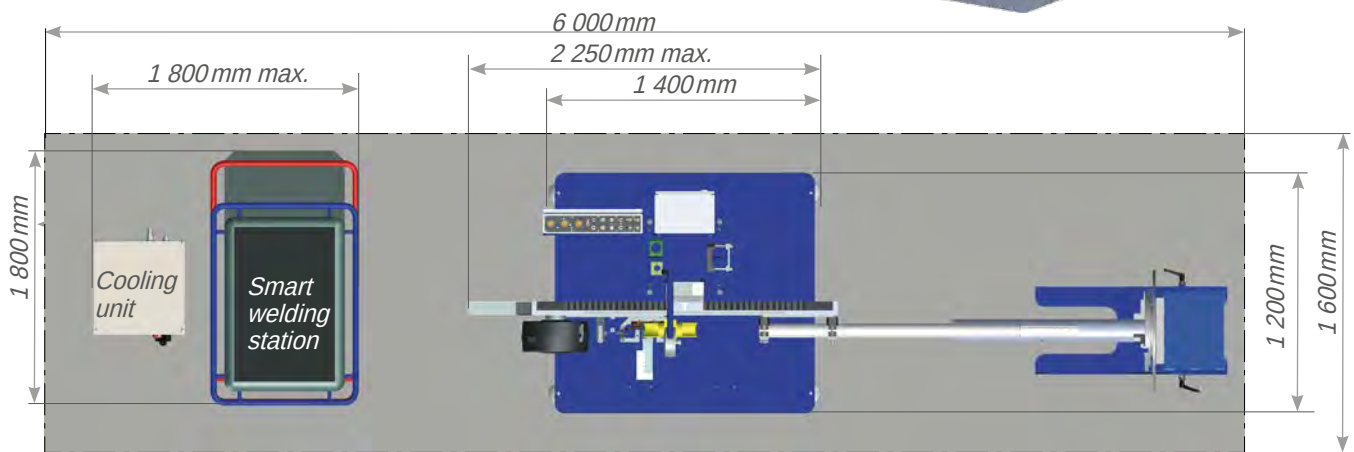
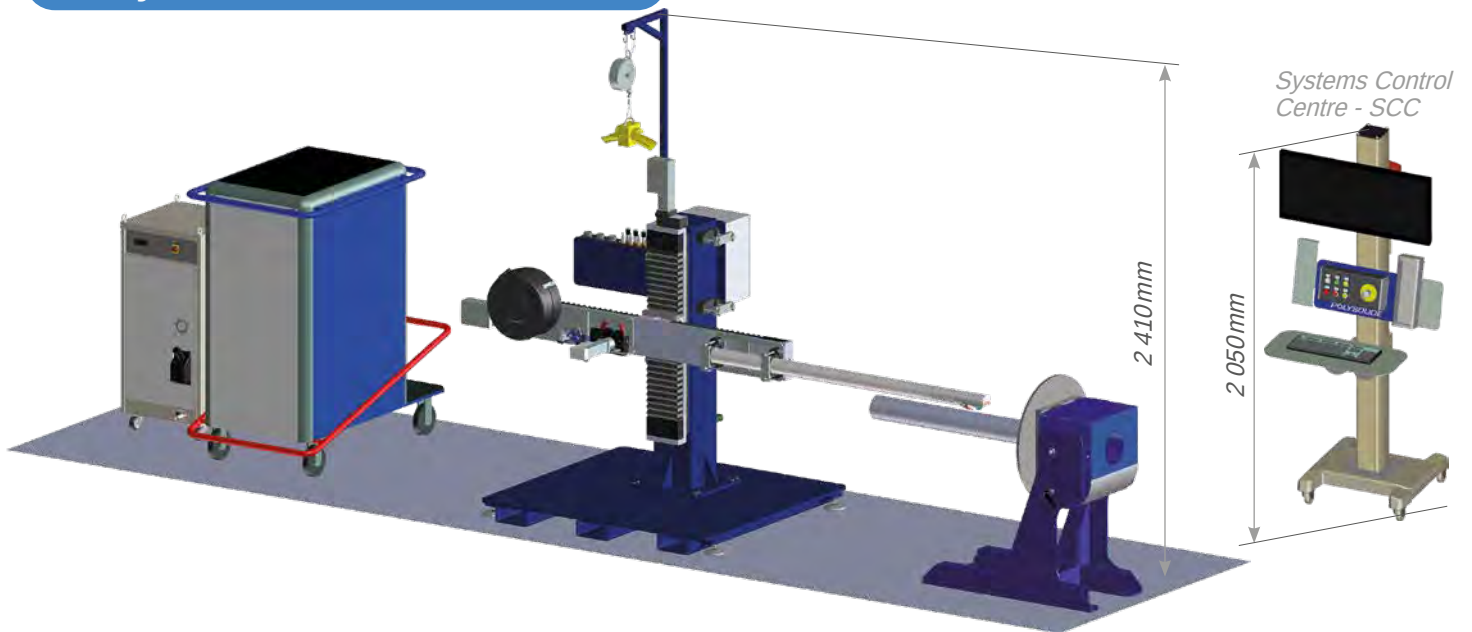
- High resolution video monitoring
- TIG HW or TIG<sup>er</sup>
- DAQbox - tool for productivity management and data acquisition
- Systems Control Centre (◆)



### ► Technical data

Cross slides stroke	1.0 m x 0.6 m
Wire feeder	0.5 to 14m/min
Compatible with wire spool	Ø 300 mm - 15 kg
Capacity of the positioner	
Maximum load	300 kg (welding position 2G) 200 kg (welding position 1G) with roller support
Workpiece diameter	Ø 50 to Ø 300 mm
Maximum length of weld overlay lance	Up to 1.5 m

## ► Layout and utilities



### Utilities

Smart welding station - TIG HW	400V - three-phase - 33kVA
Video container or SCC	230V - single phase - 6kVA
Cooling unit	230V - single phase - 4kVA

## ► Product items numbers

PolyClad Easy - weld overlay installation (including support column, cross slides, wire feeder, smart welding stations and cooling unit)

**TIG** **POW<sub>in</sub>**

**TTG** **POW<sub>in</sub>**

0038300005

0038300006

Tiltable positioner (max load 300 kg) :

Polyturn positioner with chuck O.D. 600 mm (hollow shaft Ø 170 mm)

0038001517

P0 285 motor drive (ratio 1:285)

0038850301

Chuck O.D. 200 mm, hollow shaft Ø170 mm -  $20 \leq OD \text{ tube} \leq 210 \text{ mm}$

0038004020

Chuck O.D. 400 mm, hollow shaft Ø170 mm -  $120 \leq OD \text{ tube} \leq 380 \text{ mm}$

0038004019

Digital display for torch position and step-over

0033842401

DAQbox - Data acquisition system

0033249101

Systems Control Centre (optional)

On request

Torches and lances

See Torches and lances on page 39

Video system (optional)

On request