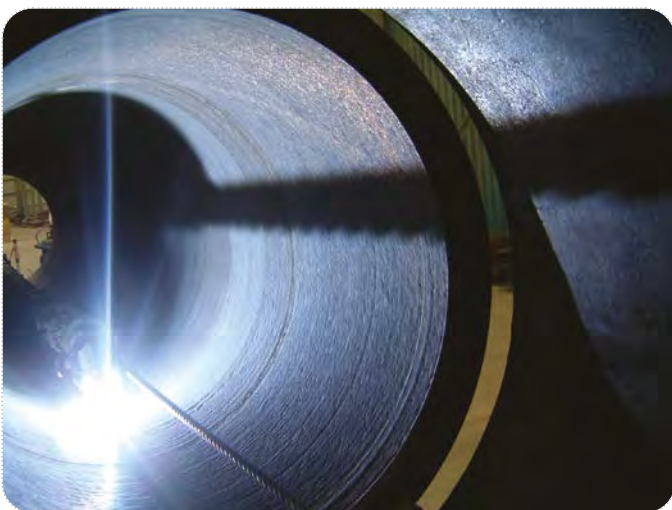




## PolyClad TWIN-TIG<sup>er</sup> C

TWIN-TIG<sup>er</sup>-12m: 360° full length I.D. weld overlay

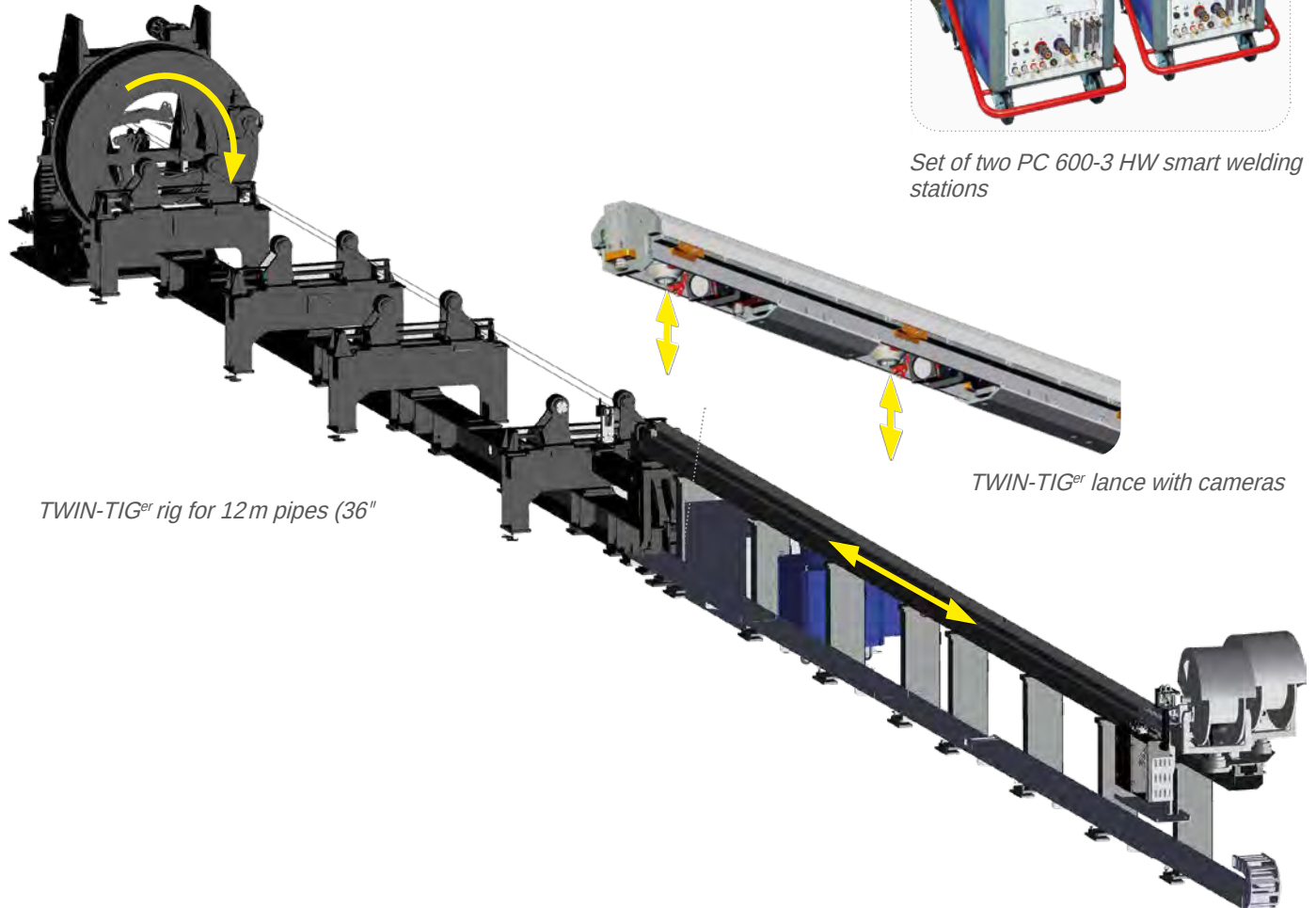


## ▶ Advantages

- Ease of setup
- Two simultaneous layers
- AVC control (independent for each torch)
- Video for continuous monitoring and relocation
- High deposition rate & high productivity

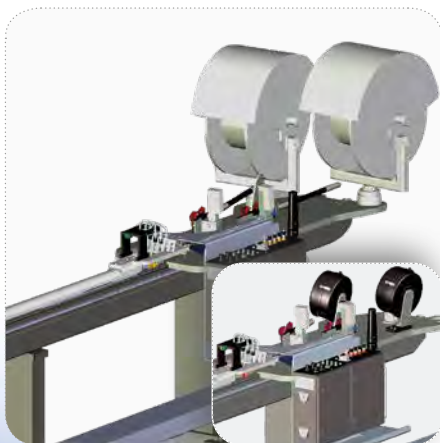


Set of two PC 600-3 HW smart welding stations



TWIN-TIG<sup>er</sup> rig for 12m pipes (36")

TWIN-TIG<sup>er</sup> lance with cameras



Carriage with 2x250 kg or 2x15 kg wire spools



Rotator with special clamping chuck

## ► Systems Control Centre

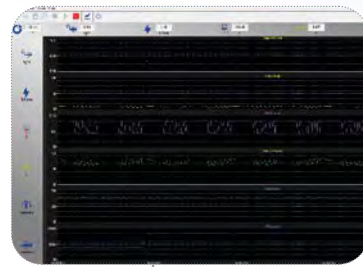
Delivered with the machine

### ► Main items

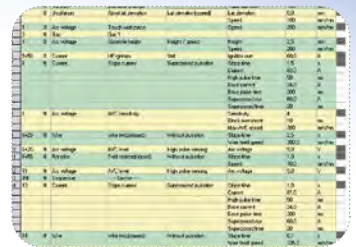
- Horizontal guiding beam - travel carriage - wire feeder units
- Weld overlay lance with two TIG<sup>er</sup>-2 torches "TWIN-TIG<sup>er</sup>"
- Head stock rotator
- Special clamping chuck
- Pipe supports
- Rope tensioning system
- Set of PC 600-3 smart welding stations

### ► Variants / options - accessories

- Extra travel carriage for preheating/cooling devices
- DAQbox - tool for productivity management and data acquisition
- Interpass temperature measurement



DAQbox (optional)



Weld overlay programming software (weld overlay parameters)



Video 1



Video 2



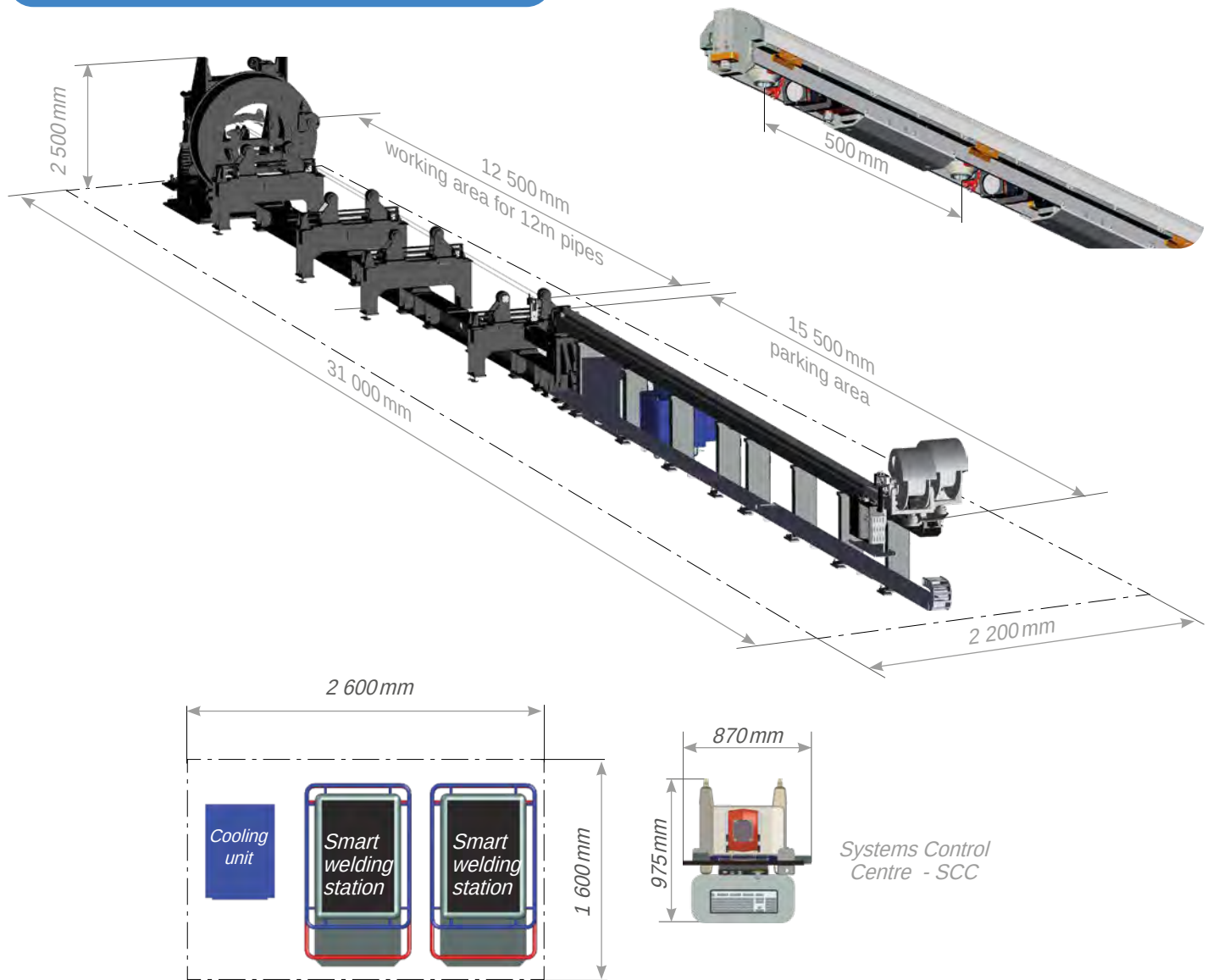
Operator programming interface

### ► Technical data

Pipe	
I.D. min. (pipe length 12 m)*	150 mm (5 29/32")
Clamping chuck	36" - 6" ≤ O.D. <sub>tube</sub> ≤ 36" or 72" - 16" ≤ O.D. <sub>tube</sub> ≤ 72"
Distance between torches 1 & 2	500 mm
AVC stroke (independant for each torch)	40 mm
Wire feeder (x2)	0.5 to 14 m/min
Compatible with wire spool	Ø 760 mm - 250 kg or Ø 300 mm - 15 kg
Video	1 camera per torch

\* Before weld overlay considering 2 layers

## ► Layout and utilities



### Utilities

Smart welding stations	400 V - three-phase - 33 kVA
Electrical cabinet	400 V - three-phase - 13 kVA

## ► Product item numbers

PolyClad TWIN-TIG<sup>er</sup> C-2 - Standard horizontal weld overlay installation  
(including horizontal guiding beam, head stock rotator, weld overlay lance with one motorised camera per torch, smart welding stations, cooling units, Systems Control Centre)

Extra travel carriage for preheating/cooling devices

DAQbox - Data acquisition system, electrical cabinet model

Interpass temperature measurement (optional)

Gas and power consumption measurements (optional)

Wire level control kit (optional)

	6" ≤ O.D. ≤ 36"	16" ≤ O.D. ≤ 72"
	0039170001	0039170002
		0038009005
		0039179200
		0039178100
		0039179201
		0039178101