






PolyClad SPX SPX endless rotation head



▶ Advantages

- Ease of setup
- Wide range of use for both simple and complex workpieces
- Increased productivity due to endless rotating head
- Flexibility
- Multiprocesses:   
- Autocentring programme for the lance



► Programming software

Two solutions depending on the workpieces complexity to be cladded:

► Main items

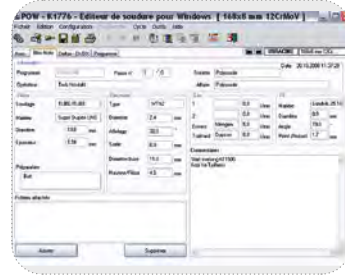
- Column & boom
- Heavy Duty cross slides
- SPX endless rotation head equipped with wire feeder and AVC cross slides
- Lance/torch
- Smart welding station

► Variants / options - accessories

- High resolution video monitoring
- Flatbed turntable
- C&B platform (smart welding station, control cabinet...)
- Manual swivel bracket $\pm 90^\circ$ (SPX head tilting)
- Extension bracket for large workpiece diameters
- Systems Control Centre (◆)
- DAQbox - tool for productivity management and data acquisition



POWin Conventional controller



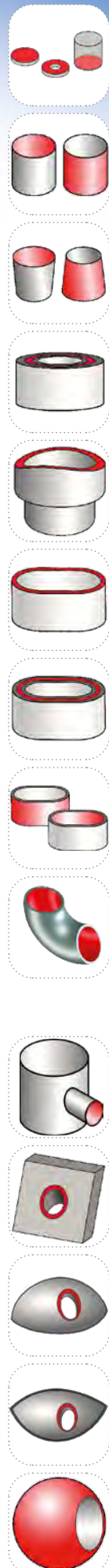
CNC axes CN Controller



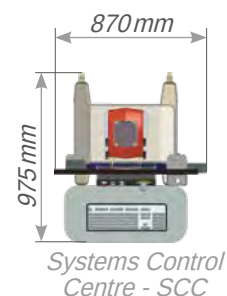
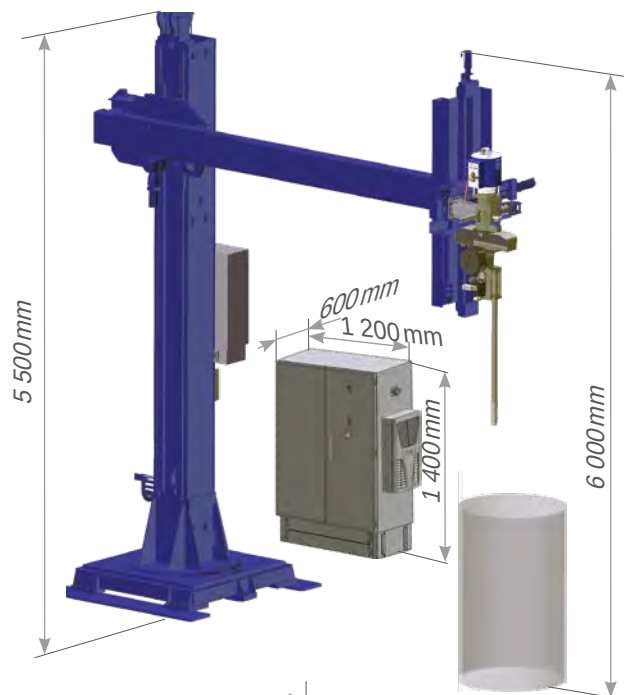
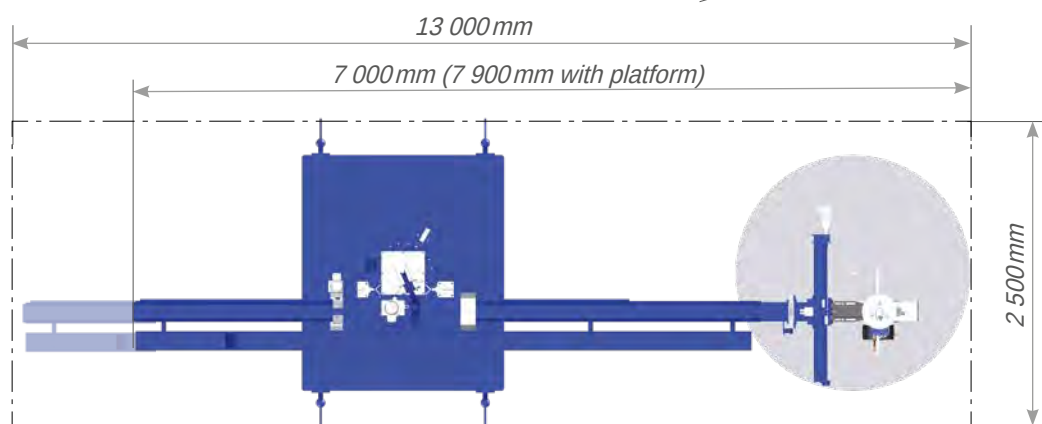
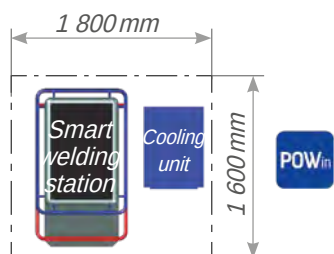
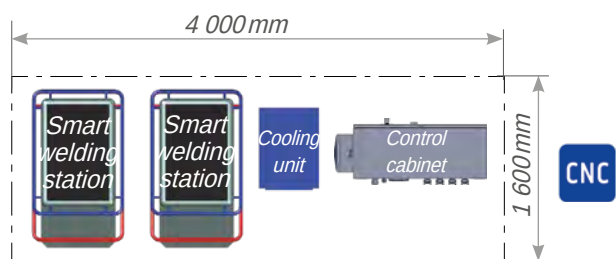
► Technical data

Column & boom	4 m x 4 m - Heavy Duty
Maximum height under boom	4 m
Vertical stroke (max.)	3 m
Horizontal stroke (max.)	4 m
Maximum load on boom end	400 kg
SPX head - workpiece diameter (max.)	600 mm 1200 mm with optional extension bracket
SPX head - AVC slide stroke	300 mm
HD cross slide strokes	2 m x 1 m
Wire feeder	0.5 to 14 m/min
Compatible with wire spool	Ø 300 mm - 15 kg
Capacity of the flatbed turntable (option)	15t - Ø 2.4m
Maximum length of weld overlay lance	1.5m

Other sizes of C&B and flatbed turntable are available on request.



► Layout and utilities



Utilities	
Column & Boom	400 V - three-phase - 16 kVA
Smart welding stations - TIG CW/HW	400 V - three-phase - 33 kVA
Smart welding stations - TIG ^{er}	400 V - three-phase - 1x33 kVA + 1x28 kVA
Video container	230 V - single phase - 6 kVA
Cooling unit	230 V - single phase - 4 kVA
Systems Control Centre (option)	230 V - single phase - 4 kVA
Flat turntable (optional)	400 V - three-phase - 6 kVA

► Product item numbers

PolyClad SPX-2 - Standard vertical weld overlay SPX installation (including C&B, HD cross slides, SPX head, smart welding station(s), cooling unit)

Flatbed turntable 15t - Ø2.4 m

C&B platform

Manual swivel bracket ±90° for SPX cross slides

Extension bracket for SPX large diameter

DAQbox - Data acquisition system

Systems Control Centre

High temperature bellows for SPX cross slides

Torches and lances

Video system

PolyClad SPX-2 - Standard vertical weld overlay SPX installation (including C&B, HD cross slides, SPX head, smart welding station(s), cooling unit)	0033690001	0033690005	On request	0033690004
Flatbed turntable 15t - Ø2.4 m	0038002003		0038002003	
C&B platform	0038001007		0038001007	
Manual swivel bracket ±90° for SPX cross slides	0038001006		0038001006	
Extension bracket for SPX large diameter	0032800201		0032800201	
DAQbox - Data acquisition system	0033249101		On request	
Systems Control Centre	On request	On request	Included	
High temperature bellows for SPX cross slides	0033380581		0033380581	
Torches and lances	See Torches and lances on page 39			
Video system	On request		Included	