

## PP645 AQUA-STOP CURB STOP REPLACEMENT TOOL

**Always wear Personal Protective Equipment like Safety Glasses, Gloves, and Work Boots.**

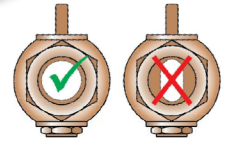
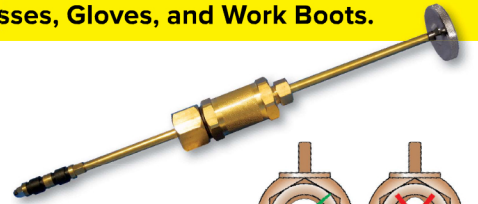
### AQUA-STOP OVERVIEW

Pollardwater's Aqua-Stop is designed to stop the flow of water in 3/4" or 1" water service lines allowing for the replacement of worn or leaking Curb Stops, Gate Valves and Ball Valves under full pressure.

By shutting off the flow of water upstream of the valve, only one excavation hole is required minimizing the impact on the property, which also requires less labor.

The Aqua-Stop can be used on round full port Curb Stops with either Flare or Compression threads or Curb Stops, Gate Valves and Ball Valves with 3/4" or 1" Female Iron Pipe threads.

Note the old valve must be able to Open for insertion of the Rubber Expanders, and the new Curb Stop must have either Flare, Compression Male, or Female Iron Pipe threads.



**AQUA STOP WORKS ONLY WITH ROUND FULL PORT OPENING CURB STOPS**



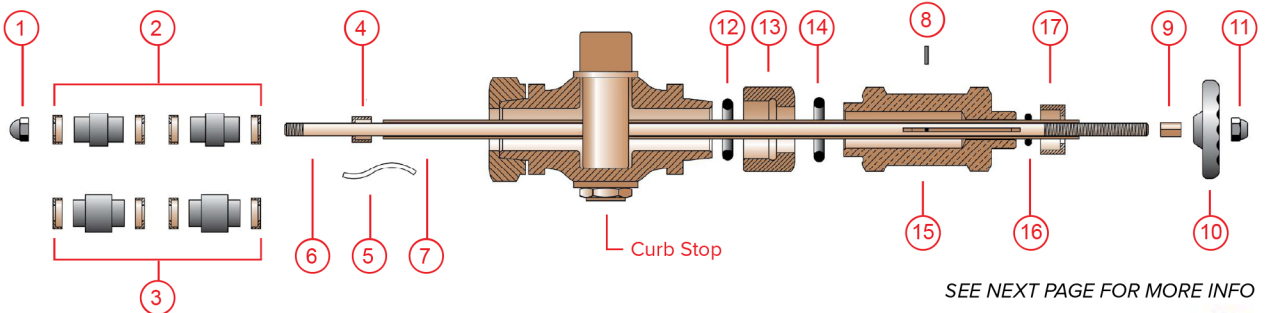
PP64602 Adapter Kit  
(order separately)

### FEATURES AND BENEFITS FOR AQUA-STOP

- Stops water flow on Service Line allowing replacement of Curb Stop
- Works on 3/4" and 1" Copper Tubing (*PP64602 Adapter Kit required for 1" size*)
- Designed for use on Flare, Compression, and Female IPT Connections
- Easy to use, saves time and money

### AQUA-STOP AND REPLACEMENT ITEMS

- **PP645** - AquaStop Curb Stop Replacement Tool
- **PP64602** - Adapter Kit Increasing to 1"
- **B1420ACORNPLA** - #1 Expander Nut
- **PP64502** - #2 Expander; 3/4"
- **PP64503** - #3 Expander; 1"
- **PP64504** - #4 Tube Packing Nut
- **PP64505** - #5 Tube Packing
- **PP64506** - #6 Operation Rod
- **PP64507** - #7 Tube
- **PP64508** - #8 Tube Pin
- **PP64509** - #9 Operating Nut
- **PP64510** - #10 Handwheel
- **PP64511** - #11 Handwheel Nut
- **PP64512** - #12 Copper Adapter O-Ring; 3/4"
- **PP64513** - #13 Copper Adapter; 3/4"
- **PP64514** - #14 Body O-Ring
- **PP64515** - #15 Body
- **PP64516** - #16 Body O-Ring
- **PP64517** - #17 Body O-Ring Nut
- **PP64603** - #20 Copper Adapter; 1"
- **PP64604** - #21 Pipe Adapter; 1"
- **PP64605** - #22 Adapter O-Ring; 1"
- **M18G4F** - Fiber Gasket

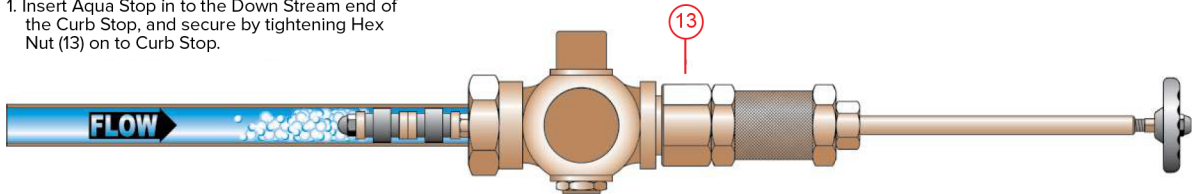


SEE NEXT PAGE FOR MORE INFO

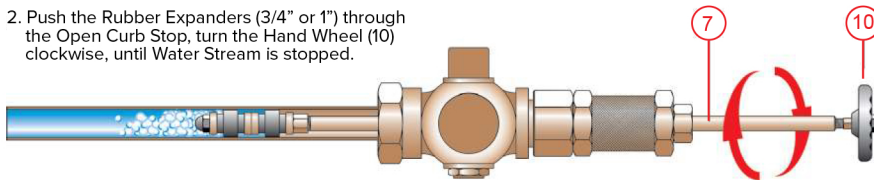
## PP645 AQUA-STOP INSTRUCTIONS

**Always wear Personal Protective Equipment like Safety Glasses, Gloves, and Work Boots.**

1. Insert Aqua Stop in to the Down Stream end of the Curb Stop, and secure by tightening Hex Nut (13) on to Curb Stop.

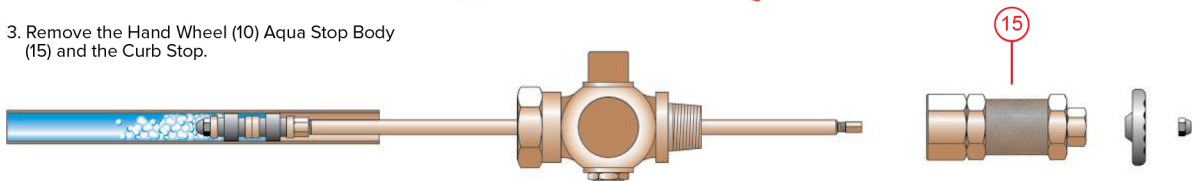


2. Push the Rubber Expanders (3/4" or 1") through the Open Curb Stop, turn the Hand Wheel (10) clockwise, until Water Stream is stopped.

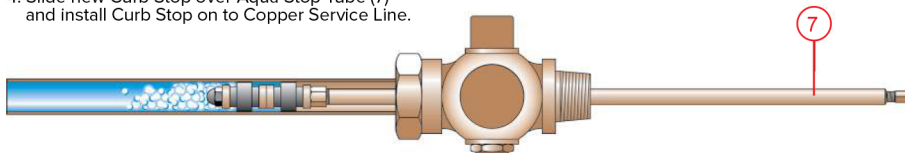


- 2a. While turning the Hand Wheel (10) clockwise, make certain that the Aqua Stop Tube (7) is secure and will not slide inside Copper Tubing.

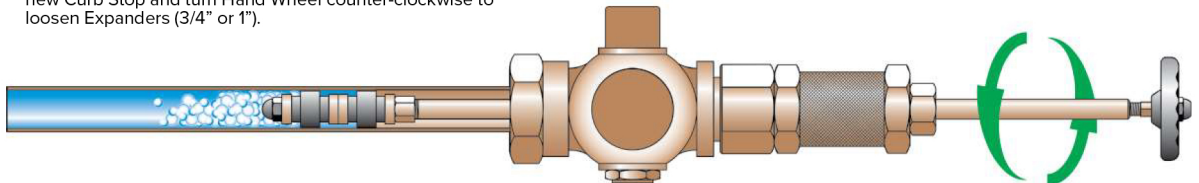
3. Remove the Hand Wheel (10) Aqua Stop Body (15) and the Curb Stop.



4. Slide new Curb Stop over Aqua Stop Tube (7) and install Curb Stop on to Copper Service Line.



5. Re-assemble Aqua Stop Body (15) and Hand Wheel (10) on new Curb Stop and turn Hand Wheel counter-clockwise to loosen Expanders (3/4" or 1").



6. Once the Aqua Stop has been pulled out, close the Curb Stop, and re-assemble the Service Line.

