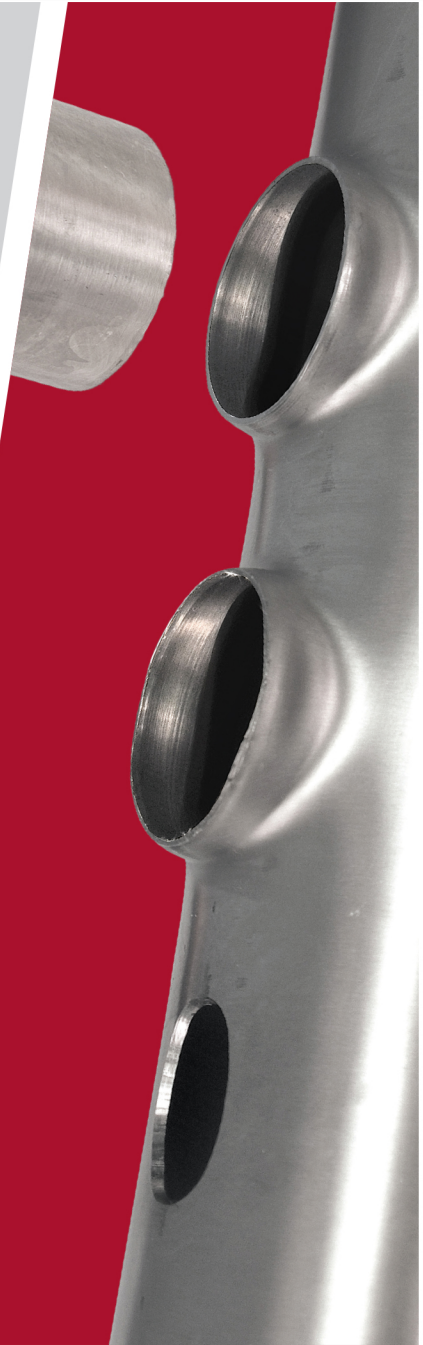


T-DRILL

PRODUCTIVITY AS A PRODUCT.



COLLARING UNIT

Hand Feed Table for small volume production of stainless steel manifolds

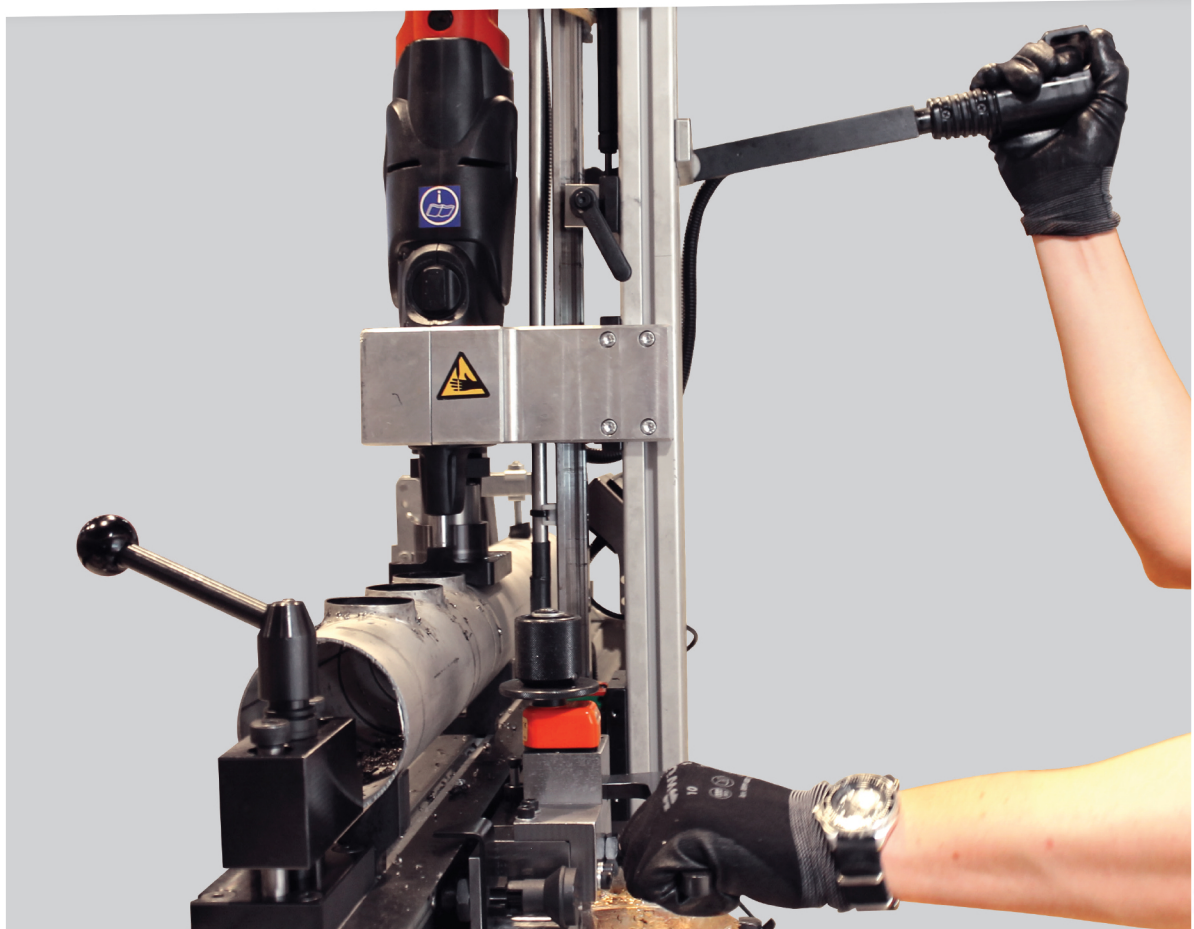
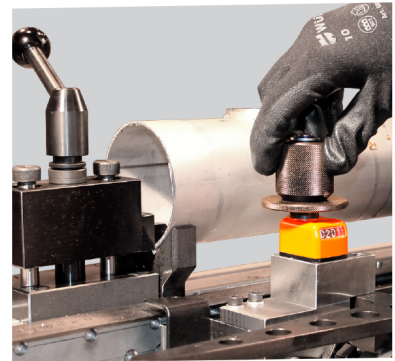
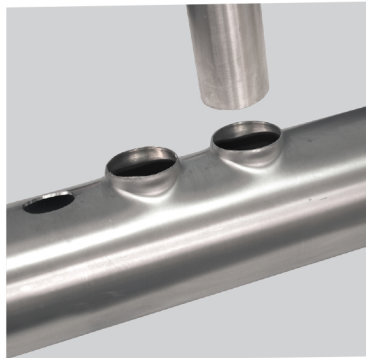
HFT-2000 SS



HFT-2000 SS COLLARING UNIT

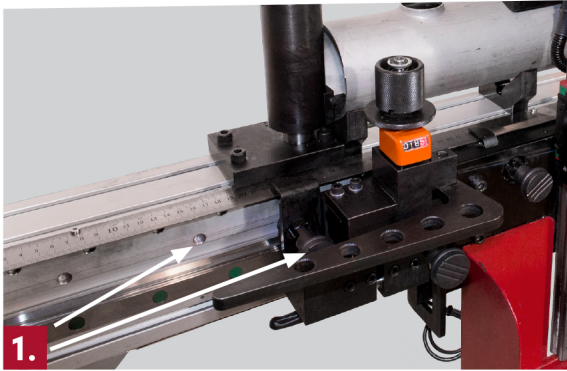
T-DRILL HFT-2000 SS is a manually operated unit that is used in conjunction with the **T-DRILL T-65 SS** collaring machine in small volume production of stainless steel manifolds. Hand Feed Table is capable of producing collars of 17-51 mm in run tubes

of 32-114mm. With the **HFT-2000 SS** you can produce five 51 mm collars in less than ten minutes without moving the tube. **T-DRILL** collars provide outstanding reliability also in extreme applications. Choose **T-DRILL**, avoid leakages.

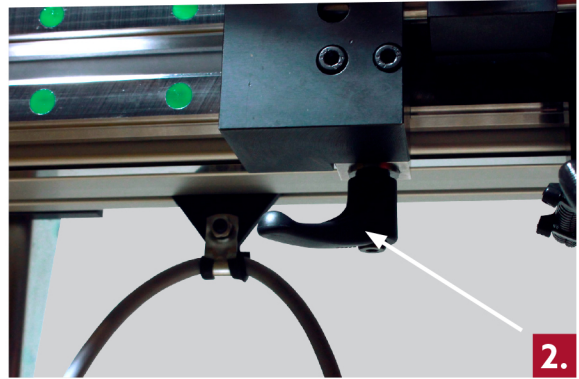


HFT-2000 SS COLLARING UNIT

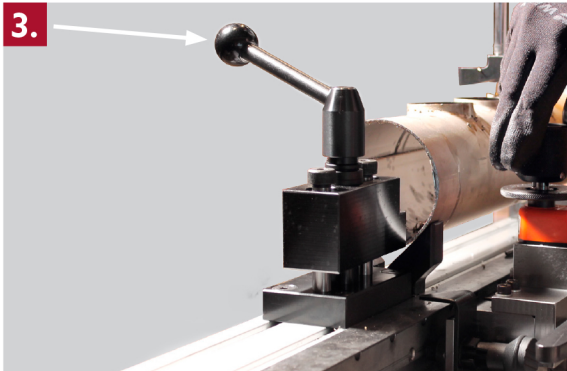
The collaring machine is manually moved by the operator after each produced collar. Featuring easy *pin-to-hole* positioning, the unit is highly productive in standard manifold production.



1. Easy and exact pin-to-hole positioning, with index plate at two customised intervals.



2. Free positioning with locking lever and measure.



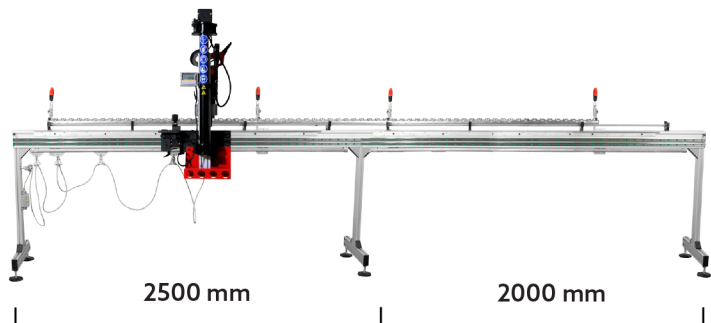
3. Fast and flexible pipe fastening.



4. Optional digital display.

HFT-2000 SS Extension modules

The maximum length of HFT-2000 work pieces is 2000 mm. This can be increased with optional easy-to-install 2000 mm extension modules.



Specifications

HFT-2000 SS

HFT Capacity

Max. wall thickness of stainless steel pipe (mm)

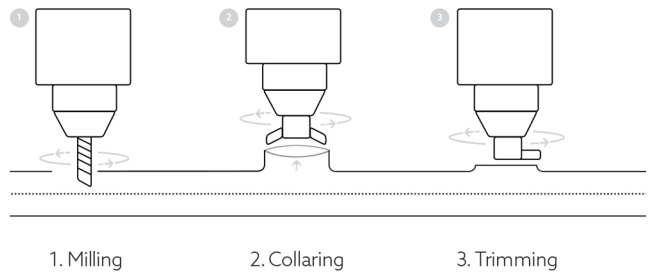
Branch tube outside diameter

Run tube outside diameter

mm	17.2	21.3	26.9	33.7	42.4	48.3
33.7	2.0	2.77	2.77	1.6	-	-
42.4	2.0	2.77	2.77	2.77	1.6	-
48.3	2.0	2.77	2.77	2.77	2.77	1.6
60.3	2.0	2.77	2.77	2.77	2.77	2.77
76.1	2.0	3.05	3.05	3.05	3.05	3.05
88.9	2.0	3.05	3.05	3.05	3.05	3.05
114.3	2.0	3.05	3.05	3.05	3.05	3.05

THE T-DRILL PROCESS

T-DRILL Collaring is the industry standard tube branching method for automotive and HVAC industries worldwide.



T-65 SS Collaring Unit

The **T-DRILL T-65 SS** is a portable, easy-to-use collaring machine for stainless steel tube. It is an ideal solution for making tee joints in a main run tube. A branch pipe can be connected to the formed outlet either by orbital welding or by manual welding.

While the quality is comparable to commercial tee fittings, your profit also increases as the **T-65 SS** eliminates two welded joints and the fitting cost. If any tube polishing is required at the weld points, the tee forming method reduces that along with the inspection costs.



DO IT WITH T-DRILL

Cut costs – Improve quality – Increase profit

- No T-fittings
- No costly inventories
- No tube cutting

- Only one welded joint
- Minimized inspection cost
- Tee ratio variation flexibility

- Smaller risk of leakage or call-backs
- Optimized flow-characteristics
- Hygienic, clean weld points

