

Flushing & Pipe Cleaning

Flushing

ROPULS Flushing Compressor

For scouring and cleaning of heating systems and flushing of drinking water pipes according to EN 806 / DIN 1988-2



Product Profile

KEY FEATURES

- One Unit - three uses for safety and energy efficiency:
Flushing of floor heating systems / heating circuits
Flushing of drinking water pipes as per DIN 1988-2
Sanitizing of drinking water pipes
- Compact dimensions and practical carriage for simple handling during transport and at the building site
- Two flushing speeds (impulse and long-term flushing) for good cleaning results
- Simple to use with the clearly arranged control panel

TECHNICAL DATA

Pipe connection:	R 1" Geka coupling
Max. pipe diameter:	DN 50 / 2"
Max. flow rate:	5 m / h
Max. water pressure:	7 bar
Max. water temperature:	30° C
Safety class:	IP 22
Oil deposition rate:	99.9%
Particle retention rate:	0,3 µm compressor
Max. operating pressure:	8 bar
Motor rating:	1.5 kW
Power supply:	230 V - 50 Hz
Dimensions (H x W x D):	630 x 380 x 340 mm

Large LED display for flow rate amounts and metering impulse, membrane keyboard with program selection keys

Clearly arranged control panel

Chemical cleaning possible with ROCLEAN attachment!

For removing deposits in floor heating and radiators

Clean heating systems save energy

Loosening and flushing of construction material before the initial start up

Clean, perfect hygienic pipe systems regarding drinking water installations

Flushing of drinking water pipes with pulsing compressed air water mix as per DIN 1988-2

Safety for plumbers and plant operators

Compressor is also for tools run on compressed air

Absolutely oil and water free air supply

Quick connect NW 7.2

For connecting pneumatic tools

Function switch

Enables you to change ROCLEAN functions easily

Ideal for removing deposits from floor heating!

Scope of delivery (No. 1000000145) ROPULS flushing compressor, 2 x 1 m fabric hose 1" with GK coupling

Description	kg	No.
ROPULS flushing compressor with hoses	28	1000000145

Flushing & Pipe Cleaning Flushing

ROPULS ROCLEAN®

On the water access side of the ROPULS flush compressor is a pressure regulator. This holds the pressure of the fresh water supply at constantly 2 bar and guarantees a constant metered dose. The ROCLEAN® injector is attached to the water exit side. The injector constantly meters the bottle contents and safeguards the system being clean

ROCLEAN® injector with compressed air hose



Pressure regulator 2 bar



Cleaning and Preservation with ROPULS ROCLEAN®

Cleaning chemicals for radiator heating systems



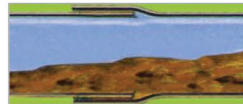
For cleaning incrustations and tough deposits. Suitable for all standard pipe materials. Does not stay in system. One bottle per 100 l system volume.



Cleaning chemicals for surface heating systems



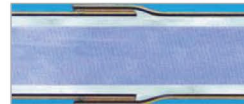
For cleaning of deposits and bio films. Suitable for all standard pipe materials. Does not stay in system. One bottle per 100 l system volume.



Preservative for radiators and surface heating systems



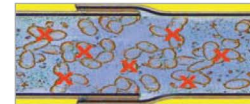
Maintains the cleaned condition and protects the system. One bottle is sufficient for 100 l system volume.



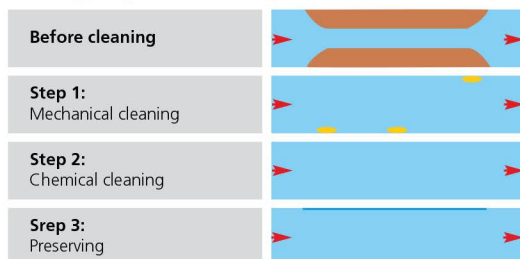
Disinfection of drinking water systems



Does not stay in system. One bottle per 100 l system volume.



Cleaning and preservation steps:



Description	Colour Code	kg		No.
ROCLEAN® injector		1.1	1	1000000190
Pressure regulator 2 bar		0.3	1	1500000203
Chemical cleaning:				
– Radiator heating systems	Orange	6.3	6	1500000200
– Surface heating systems	Green	6.3	6	1500000201
Preservative	Blue	6.3	6	1500000202
Disinfection	Yellow	6.3	6	1500000157

Flushing & Pipe Cleaning

Decalcifying

ROCAL 20 / ROMATIC 20

Decalcifying pump with flow direction change



Product Profile
RANGE OF USE For the quick decalcifying of heat exchangers, water pipes, water tanks, heat and cooling systems
KEY FEATURES
<ul style="list-style-type: none"> With the help of the flow reversal (change of the direction of flow) even very hard calcifications and deposits can be loosened Only ROMATIC: Running time of the pump and flow reversal can be programmed, which enables comfortable operation Approved for fluid temperatures up to 50° C for especially efficient decalcifying Constant circulation of the decalcifying chemical prevents damage that can be caused by the development of gas during decalcification

TECHNICAL DATA	
Connection:	R 1/2"
Tank volume:	15 l
Power supply:	230 V 50 Hz
Motor rating:	150 Watt
Volume flow:	40 l / min.
Delivery height:	10 m

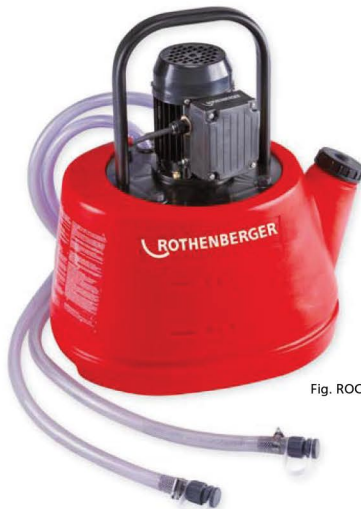
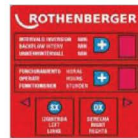


Fig. ROCAL 20

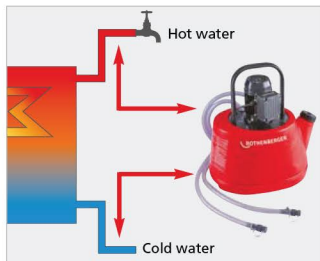
Automatic flow reversal!



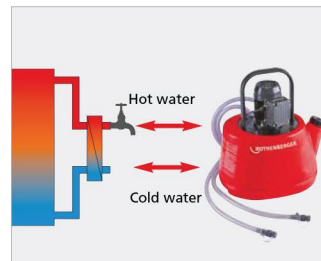
Fig. ROMATIC 20



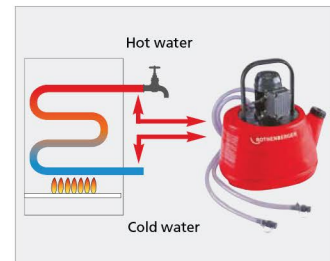
Decalcifying of drinking water storage tanks



Decalcifying of fresh water stations and external heat exchangers



Decalcifying of heat exchangers, water heaters or drinking water pipes



Scope of delivery: ROCAL 20 (No.61190) and ROMATIC 20 (No. 61100) each contain: 2x hoses with 1/2" connection (2 m long), 2 x double nipple 1/2-3/8", 2 x double nipple 1/2-1/2", 2x double socket 3/4-3/4", 2 x reduction piece 1/2-3/4"

Description	kg		No.
ROCAL 20	6	1	61100
ROMATIC 20	6	1	61190



Flushing & Pipe Cleaning

Decalcifying

ROCAL Acid Multi / Plus

Decalcifying chemical for use with ROCAL 20, ROMATIC 20

RANGE OF USE

ROCAL Acid Multi

For the safe decalcification of all common* piping systems, heat exchangers, fresh water stations and water tanks

ROCAL Acid Plus

For strong calcifications and scale build-up. Only suitable for technical systems. Not suitable for drinking water pipes.

KEY FEATURES

- With colour indication. The use of the chemical effects is shown by the change of the fluid colour
- Concentrate to mix with water
- With corrosion protection

*please see table below



	ROCAL Acid Multi	ROCAL Acid Plus
Copper	●	●
Steel	●	●
Stainless steel	●	○
Aluminium	●	○
Brass	●	○
Plastic	●	○

● suitable ○ unsuitable

Neutralizer Powder

Neutralizes ROCAL Acid Plus / ROCAL Acid Multi

RANGE OF USE

Use is necessary after ROCAL Acid Plus / ROCAL Acid Multi has been used. The neutralizer dissolves in water. The decalcification pump and system are flushed with this solution. The PH value in the system and pump is neutral afterwards.

- 30 g per 1 l of water
- 300 g per 10 l of water



No. 61115



No. 61120

Description	kg	1	4	No.
ROCAL Acid Multi	5	1	4	1500000115
ROCAL Acid Multi	10	1	2	1500000116
ROCAL Acid Multi	30	1		1500000117
ROCAL Acid Plus	5	1	4	61105
ROCAL Acid Plus	10	1	2	61106
ROCAL Acid Plus	25	1		1500000914
Neutralizer powder	1	1	5	61115
Neutralizer powder	10	1	2	61120

ROSOLAR PUMP / ROSOLAR PUMP PLUS

Solar filling pump

KEY FEATURES

- A powerful centrifugal pump for rapid filling and effective flushing out and ventilation of solar plant
- Optional: robust and heat resistant (up to 90°C) Impeller pump: small particles of solid materials are also conveyed without difficulty. Fitted with a pressure relief valve
- Heat resistant hoses (up to 100°C) allow safe filling and maintenance of solar plant
- A height-adjustable (76-110 cm) telescopic grip for space-saving storage, simple transport and good handling in tight cellars
- Well thought-through handling: the canister can easily be filled through the large opening. The shut-off valve in the bottom allows simple/uncomplicated emptying of the whole container

TECHNICAL DATA

Dimensions (H x B x T):	49 x 51 x 76 cm
Container volumes:	30 l
Hoses:	Length: 2 x 3 m
	Connections: 1/2"
	Heat resistant: up to 100°C

Description	No.
ROSOLAR PUMP (with centrifugal pump)	1500000135
ROSOLAR PUMP PLUS (with impeller pump)	1500000136

Height-adjustable telescopic grip (76 - 110 cm)

Small and flexible as required

Heat resistant hoses (up to 100°C)

Safe working – also when servicing solar plant

Optional: impeller pump

Small particles of solid materials are also conveyed without difficulty

A dirt filter with sight glass

Filters residues out of the medium



8