

HSS-M2  
MINI-CUT

# HSS-M2 MINI-CUT

Mini-trépan et couteaux pour points de soudure  
Mini-hole saws and spot weld cutters



## CARACTÉRISTIQUES • PROPERTIES

### Trépan HSS-M2 MINI-CUT pour perceuses portables et sans fil

#### L'outil de perçage idéal pour:

- Installations électriques
- Travail de canalisation
- Installation et entretien
- Secteur de l'automobile
- Et bien d'autres secteurs
- Tuyauterie
- Fabrication de tôle
- CVAC/R
- Elimination des points de soudure

#### En raison de la coupe mince de seulement 2,3 mm:

- La pression de coupe est très réduite, idéale pour l'utilisation d'une perceuse sans fil.
- Aucune déformation des feuilles de métal mince.

**Perce des trous propres, presque sans bavures, en quelques secondes. Perce dans des tôles extrêmement fines ainsi que dans des blocs jusqu'à 13 mm d'épaisseur.**

**Perce dans des matériaux plats ainsi que dans des tubes en:**

- Acier inoxydable
- Fonte
- Acier
- Métaux non-ferreux

### HSS-M2 MINI-CUT Hole saws for Portable machines and cordless drills

#### The ideal drilling tool for:

- Electrical installations
- Conduit work
- Installation and maintenance
- Automotive aftermarket
- And many other industries
- Piping
- Sheet metal fabrication
- HVAC & PHCC
- Removing spot welds

#### Because of thin cutting width of only 2.3 mm:

- Very little cutting pressure for long battery life if using cordless drilling machines.
- No deforming of thin sheet metals.

**Drills clean, almost burr-free holes in seconds. Drills in extremely thin sheet metals as well as in blocks up to 13 mm thickness.**

**Drills in flat material as well as in tubes made of:**






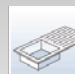






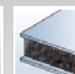
- Stainless steel
- Cast iron
- Steel
- Non ferrous material



Revêtement TIN-GOLD pour une durée de vie considérablement plus longue aussi lors d'usinage à sec (sans/peu de liquide de refroidissement).  
TiN-GOLD coating for considerably longer service life also when machining dry (no/little) cooling.

Ø MÉT.	Ø FRAC.	ITEM ITEM	Ø MÉT.	Ø FRAC.	ITEM ITEM	Ø MÉT.	Ø FRAC.	ITEM ITEM
	Equivalent	<b>21.1000</b>		Equivalent	<b>21.1000</b>		Equivalent	<b>21.1000</b>
6	15/64"	21.1000.006	13	1/2"	21.1000.013	20	25/32"	21.1000.020
7	--	21.1000.007	14	9/16"	21.1000.014	21	13/16"	21.1000.021
8	5/16"	21.1000.008	15	19/32"	21.1000.015	22	7/8"	21.1000.022
9	--	21.1000.009	16	5/8"	21.1000.016	23	29/32"	21.1000.023
10	25/64"	21.1000.010	17	11/16"	21.1000.017	24	15/16"	21.1000.024
11	7/16"	21.1000.011	18	45/64"	21.1000.018	25	1"	21.1000.025
12	15/32"	21.1000.012	19	3/4"	--	--	--	--

## UTILISATION • APPLICATION

												
Acier Steel < 500 N	Acier Steel < 750 N	Acier Steel < 900 N	Acier Steel < 1100 N	Acier Steel < 1400 N	Inox Stainless < 900 N	Inox Stainless > 900 N	Alu Alu < 10% Si	Alu Alu > 10% Si	Cuivre, laiton, fer-blanc Copper, brass, tin	Plastiques GRP/CRP Plastics GRP/CRP	Fonte grise Grey cast iron	Matériaux sandwich Sandwich materials
✓	✓	✓	✓	✓	✓	✓	✓	✓	✓	✓	✓	✓
✓ Optimale · Optimal    ✓ Bonne · Good    ✓ Possible · Possible												

# ENSEMBLE SET

## MINI-TRÉPANS ET COUTEAUX POUR POINTS DE SOUDURE MINI-HOLE SAWS AND SPOTWELD CUTTERS



21.2000

DESCRIPTION / DESCRIPTION	ITEM / ITEM
MINI-CUT, un de chaque / One of each	
» Ø 6, 7, 8, 9, 10, 11, 12, 13, 14, 15, 16, 17, 18, 19, 20, 21, 22, 23, 24, 25 mm	
Porte-outil pour / Arbor for Ø 6-20 mm 3/8"-24	21.0002
Porte-outil pour / Arbor for Ø 21-25 mm 1/2"-20	21.0003
Pointe d'éjection pour / Spare ejector pin for 21.0002	21.0010
Pointe d'éjection pour / Spare ejector pin for 21.0003	21.0015
Clé Allen / Allen key	21.0011
Pointeau / Center punch	20.1238

20.1481

Coffret vide  
Empty box



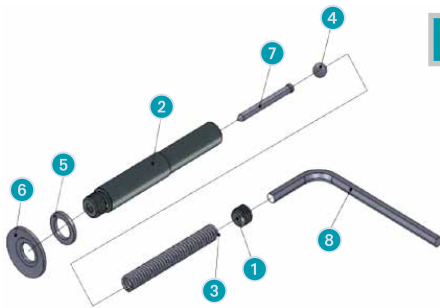
## PIÈCES ET ACCESSOIRES POUR LA SÉRIE 21.1000 PARTS AND ACCESSORIES FOR SERIES 21.1000

### MONTAGE ASSEMBLY



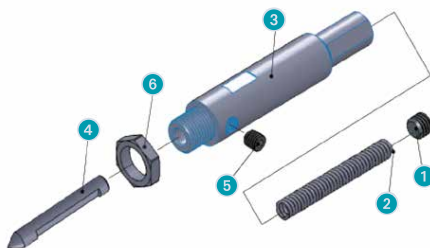
ITEM ITEM	DESCRIPTION DESCRIPTION
21.0002	Porte-outil / Tool holder Tige 3/8" shank
21.0003	Porte-outil / Tool holder Tige 1/2" shank

### PIÈCES DE RECHANGE POUR PORTE-OUTIL 21.0002 SPARE PARTS FOR TOOL HOLDER 21.0002



21.0002	No.	DESCRIPTION / DESCRIPTION	ITEM / ITEM
1		Vis Allen / Allen screw	21.0004
2		Corps du porte-outil / Arbor body	21.0005
3		Ressort d'éjection / Ejector spring	21.0006
4		Bille en acier / Round steel bead	21.0007
5		Rondelle plate / Flat washer	21.0008
6		Joint concave / Concave gasket	21.0009
7		Pointe d'éjection / Ejector pin	21.0010
8		Clé Allen / Allen key	21.0011

### PIÈCES DE RECHANGE POUR PORTE-OUTIL 21.0003 SPARE PARTS FOR TOOL HOLDER 21.0003



21.0003	No.	DESCRIPTION / DESCRIPTION	ITEM / ITEM
1		Vis Allen / Allen screw	21.0012
2		Ressort d'éjection / Ejector spring	21.0013
3		Corps du porte-outil / Arbor body	21.0014
4		Pointe d'éjection / Ejector pin	21.0015
5		Vis Allen / Allen screw	21.0016
6		Rondelle plate / Flat washer	21.0017