



Closed Chamber Welding Head

for welding of tube to tube joints

Easy to use, highest quality and productivity

General Characteristics

Advantages

- ▶ Oxidation-free welds
- ▶ Optimised ergonomics, easy to use
- ▶ Respecting international standards and norms (EHEDG, ASME, FDA...)
- ▶ Compatible with all Polysoude™ Power Sources

Resulting from 50 years' experience in mastering welding technologies

Reversible hook for an enlarged range of clamping tolerances

Interchangeable flexible titanium Tube Clamp Inserts – TCI's™. Comply with standard tube O.D. sizes and tolerances, for hygienic and high purity requirements

Narrow welding head profile for use in areas with constrained axial and radial clearance

Closed loop regulation to ensure precise, constant or pulsed welding speed

Return-to-home feature: the electrode gear automatically returns to its loading position

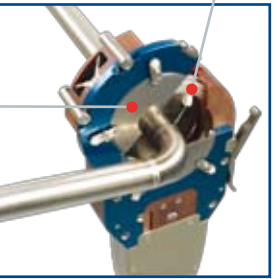
Particularly designed for high duty cycle applications by means of high temperature resistant materials and closed loop water cooling

Encoder for position based control of the welding program

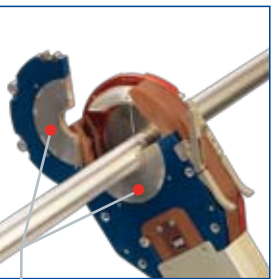
Remote control

Single sided tube clamp

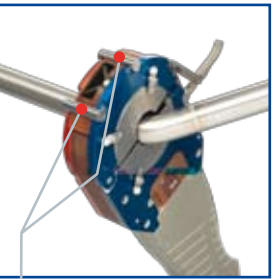
Off-set electrode holder



Elbow kit



Flexible Titanium Tube Clamp Inserts - TCI's™



Reinforcement bars



Integrated remote control

Associated Power Sources



▶ PS 164-2

160 A, "all inclusive", portable, single-phase power supply



▶ P4

170 A, "modular", portable, programming by PC or touch screen, single-phase power supply

The Complete Range



MW 40



MW 65



MW 115



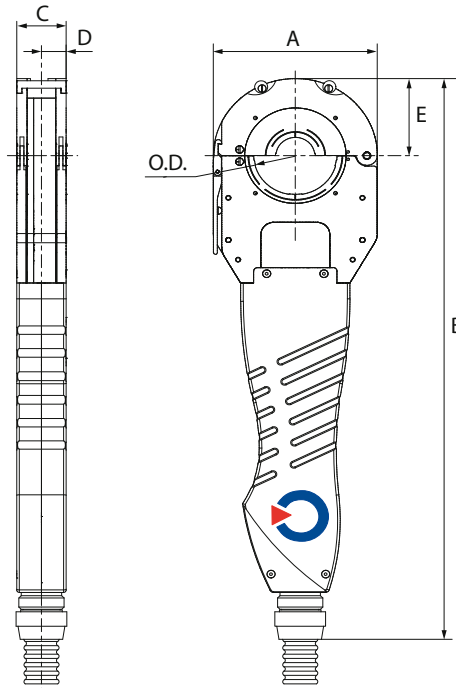
MW 170

Technical Specifications

Type	Tube O.D. in mm / inches		Dimensions in mm					Net weight in kg
	from	to	A	B	C	D	E	
MW 40	6	40	100	430	38	19	50	6
MW 65	12	65	126	458	38	19	63	7
MW 115	25	115	200	547	46	23	100	9
MW 170	80	170	290	580	63	31,5	145	18

Type	Electrode off-set					
	1 – 5 mm		2 – 11 mm		3 – 5 mm	
	Max. tube O.D. in mm / inches					
MW 40	33,7 mm	1 - 5/16"	19,05 mm	3/4"	/	/
MW 65	60,3 mm	2 - 3/8"	42,4 mm	1 - 21/32"	/	/
MW 115	114,3 mm	4 - 1/2"	101,6 mm	4"	/	/
MW 170	/	/	/	/	168,3 mm	6- 5/8"

Cable length: 5,5 m



Options and Accessories

- Titanium Tube Clamp Inserts – TCI's™ for all tube and pipe O.D.s, available both in metric and imperial sizes
- Elbow-kit with off-set electrode holder, single sided tube clamping and gas seal, designed for fittings or components with short stick-out
- Extension cable (15 m)
- Dual welding head switch box
- Compact brief-case for transport and storage
- Tungsten electrodes, pre-sharpened and pre-cut

 Adapting to all your applications!



"Learning to use the equipment took me less than one day of training."