

REMS ROS P 26 – fast cutting in one cut!

■ Stable magnesium version, extremely light ■ For one-hand operation. Fast cutting in one cut ■ Specially hardened and specially ground blade, exchangeable, PTFE-coated. Made in Germany.

REMS ROS P 26. Pipe shears for plastic and multilayer composite tubes. With blade. For pipes $\varnothing \leq 26$ mm / 1" **Art.-No. 291240**



REMS REG 8-35/10-54 – the multiple edges!

■ Easy, effortless deburring through multiple blades which are specially hardened and ground ■ Robust metal design for tough use

REMS REG. Outer-inner pipe deburrer for manual operation. Stainless steel tubes, other steel tubes, copper, brass, aluminium tubes, plastic pipes.

REG 8-35 \varnothing 8–35 mm, $\frac{3}{8}$ –1 $\frac{1}{8}$ " **Art.-No. 113825**

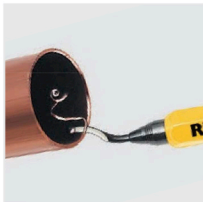
REG 10-54 \varnothing 10–54 mm, $\frac{1}{2}$ –2 $\frac{1}{8}$ " **Art.-No. 113830**



REMS REG 10-54 E – also for electric drive!

Also for electric drive by commercially available screw driver (speed < 300 rpm).

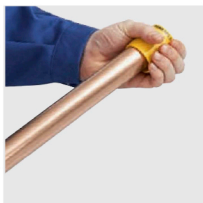
REG 10-54 E \varnothing 10–54 mm, $\frac{1}{2}$ –2 $\frac{1}{8}$ " **Art.-No. 113835**



REMS REG Universal – the all purpose deburrer!

■ Robust metal design for tough use ■ Rotating universal deburrer blade in handle accomodates to the work piece edge to be deburred ■ Fast, simple blade replacement

REMS REG Universal. Universal deburrer for deburring copper, steel, brass, aluminium and plastic. **Art.-No. 113910**
Replacement blade **Art.-No. 113360**



REMS REG 3-35 – the sharp edge!

■ Outer-inner tubing deburrer ■ 3 deburrer blades, specially hardened and ground

REMS REG 3-35. Outer-inner tubing deburrer. Copper, brass, aluminium, steel tubes, plastic pipes, \varnothing 3–35 mm, $\frac{1}{8}$ –1 $\frac{1}{8}$ ". **Art.-No. 113900**

Made in Germany



REMS REG 10-42 – by hand or electric!

■ Specially for stainless steel tubes ■ Solid quality tool for high demand and versatile use ■ Adapter for electric drive (accessory)

REMS REG 10-42. Outer-inner deburrer for manual or electric operation. Stainless steel tubes, other steel tubes, copper, brass, aluminium tubes, plastic pipes, \varnothing 10–42 mm, $\frac{1}{2}$ –1 $\frac{1}{8}$ ". **Art.-No. 113810**

Adapter for use with electric screw driver (speed \leq 300 rpm) **Art.-No. 113815**

Made in Germany



REMS RAG – chamfering at 15°!

■ Pipe diameter and wall thickness steplessly adjustable ■ Also for deburring at plastic sleeve welding ■ Replacable chamfering blades ■ Patent DE 44 09 983, patent US 5,641,253

REMS RAG P. Pipe chamfering tools for external chamfering (15°) of plastic pipes \varnothing 16–250 mm, $\frac{3}{4}$ –10", wall thickness \leq PN 16

P 16–110 **Art.-No. 292110**

P 32–250 **Art.-No. 292210**

Made in Germany

