

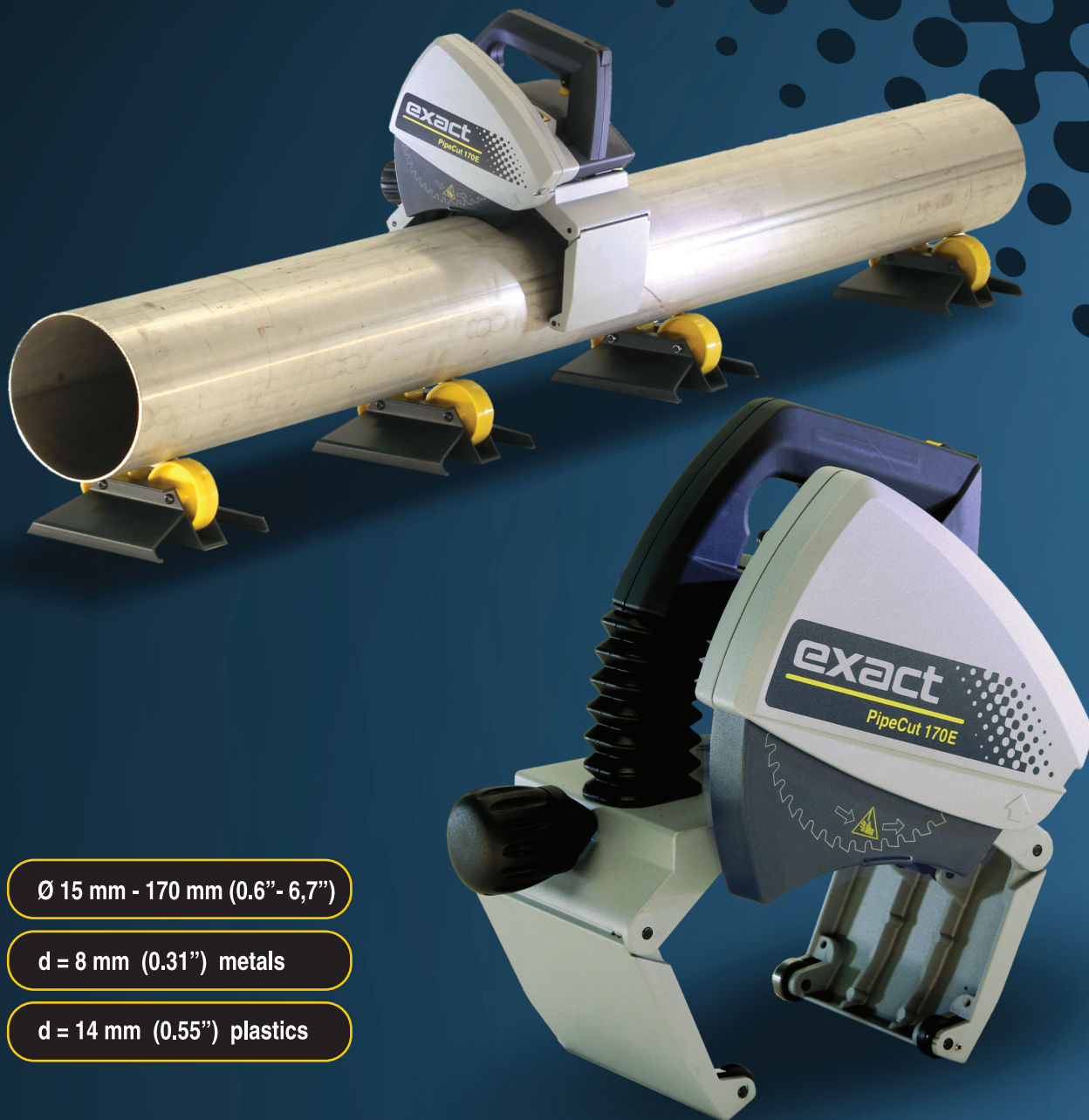
# exact

## PipeCut 170E

Power and accuracy  
with a lightweight machine

The Original  
Pipe Cutting System  
made by Exact Tools

Designed in Finland



Ø 15 mm - 170 mm (0.6"- 6,7")

d = 8 mm (0.31") metals

d = 14 mm (0.55") plastics

### Powerful and handy PipeCut 170E.

It can be used for cutting both metal and plastic pipes. Because of its adjustable speed and steady torque feature it is ideal for cutting stainless steel and cast iron pipes. It offers high-end performance for pipe fitting professionals.

[www.exacttools.com](http://www.exacttools.com)

# exact

## PipeCut 170E

### Blades

There are several different types of cutting blades which are meant for different purposes available for Exact PipeCut 170 machines:

**TCT 140:** Blade with tungsten carbide tips for general use. Suitable for cutting steel, copper, aluminium and plastic.

**CERMET 140:** Blade with ceramic tips for heavy duty applications, especially for cutting stainless and acid proof steel.

**Diamond 140:** Diamond blade designed only to be used for cutting cast iron pipes.

**DIAMOND X140:** Heavy duty special diamond blade only to be used for cutting cast iron and ductile pipes.

### Pipes

Exact PipeCut 170E can be used to cut all types of pipe material, such as steel, copper, cast iron, stainless steel, acid-resistant steel, multi-layer materials, and all plastics.

### Exact PipeCut 170E pipe cutting system package contents:

1. PipeCut shoulder bag
2. Exact PipeCut 170 pipe saw
3. Cutting supports 4 pcs
4. Operating instructions booklet
5. Allen keys 5 mm and 2 mm fitted to the machine
6. TCT blade  $\varnothing$  140 mm fitted on the machine
7. DVD-video disc containing instructions and demonstrations

### Technical data

Model	Pipecut 170E
Voltage	110 V, 120V and 230 V / 50-60 Hz
Power / Current	1100 W / 9,2 A
No-Load speed	1600 - 3500 / min
Intermittent operation	2,5 min ON / 7,5 min OFF (S3 25%)
Blade diameter	140 mm (5.51")
Mounting bore	62 mm (2.44")
Weight	5,7 kg (12 lbs)
Range of use $\varnothing$	15 mm – 170 mm (0.6" - 6.7")
Max. pipe wall	6 mm (0.31") steel, 14 mm (0.55") plastics

